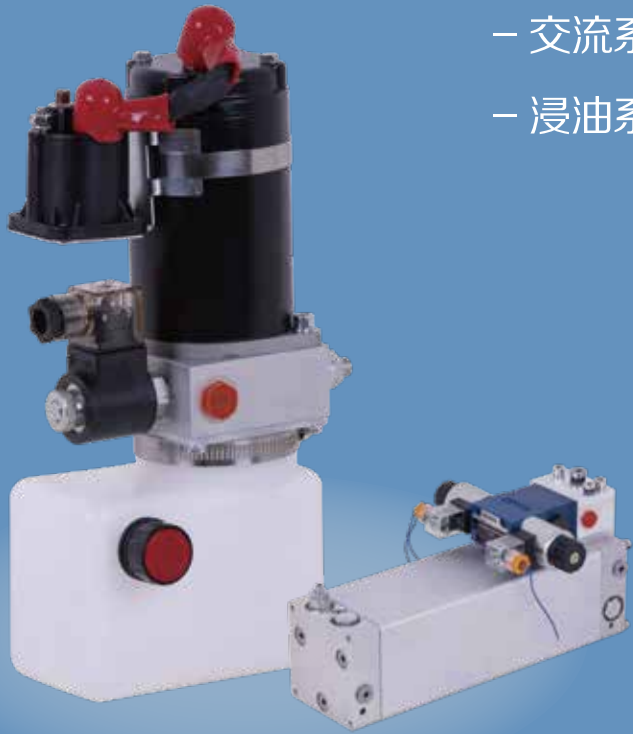




PANIC

- 直流系列液压动力单元
- 交流系列液压动力单元
- 浸油系列动力单元



微型液压专家

宁波帕尼科液压技术有限公司

电话/Tel : 0574-62130352

传真/Fax : 0574-62130353

地址：余姚市泗门镇同济路12号

邮箱/E-mail : info@panic-nb.com

网站/Web : www.panic-nb.com

Add: No. 12 Tongji Road, Simen Town, Yuyao City

宁波帕尼科液压技术有限公司  
Ningbo Panic Hydraulic Technology Co., Ltd



## 公司简介 COMPANY PROFILE

2016

宁波帕尼科液压技术有限公司成立  
Ningbo panico Hydraulic Technology Co., Ltd.  
was established

80+

现有员工50余人  
There are more than 80 employees

5, 000, 000

注册资金500万元  
The registered capital is 5 million yuan

宁波帕尼科液压技术有限公司成立于2016年，PANIC是一家专业的液压阀块、插装阀、液压动力单元及液压系统的生产制造厂家。公司成立之初，就致力于微型液压单元的研发与制造。公司拥有多项自主知识产权，并通过了ISO9001国家质量体系认证、欧盟CE认证，专利30余个。并荣获宁波科技中小型创新企业，国家高新技术企业，宁波市“专精特新”企业等荣誉称号。

公司通过不断的投入，完成了对上游供应链的完美整合，坚持核心技术的自主创新，坚持液压单元微型化和智能化的研究战略，并执行严格的质量体系，让帕尼科公司生产的液压产品在严苛的市场环境中，具有长久的竞争优势。

Ningbo Panico Hydraulic Technology Co., Ltd. was established in 2016. PANIC is a professional manufacturer of hydraulic valve blocks, plug-in valves, hydraulic power units, and hydraulic systems. At the beginning of its establishment, the company was committed to the research and manufacturing of micro hydraulic units. The company has multiple independent intellectual property rights and has passed ISO9001 national quality system certification, EU CE certification, and more than 30 patents. And won honors such as Ningbo Science and Technology Small and Medium sized Innovation Enterprise, National High tech Enterprise, and Ningbo "Specialized, Refined, Unique and New" Enterprise.

Through continuous investment, the company has achieved perfect integration of the upstream supply chain, adhered to independent innovation of core technologies, pursued research strategies for miniaturization and intelligence of hydraulic units, and implemented strict quality systems, enabling the hydraulic products produced by Panico Company to have a long-term competitive advantage in the harsh market environment.

### 经营理念

MANAGEMENT  
IDEA

以诚为本  
Honesty oriented

海纳百川  
The sea embraces all rivers

以信为根  
Take faith as the root

厚德载物  
social commitment



目录

CONTENTS

DC series hydraulic power unit

一、直流系列液压动力单元

- 09 小金刚动力单元一/  
Mini Pallet Truck Hydraulic Power Unit 1
- 10 小金刚动力单元二/  
Mini Pallet Truck Hydraulic Power Unit 2
- 11 小金刚动力单元三/  
Mini Pallet Truck Hydraulic Power Unit 3
- 12 小金刚动力单元四/  
Mini Pallet Truck Hydraulic Power Unit 4
- 13 小金刚动力单元五/  
Mini Pallet Truck Hydraulic Power Unit 5
- 14 便携式堆高车动力单元/  
Portable stacker power unit
- 15 全电动堆高车动力单元一/  
Hydraulic power unit of full electric stacker 1
- 16 全电动堆高车动力单元二/  
Hydraulic power unit of full electric stacker 2
- 17 前移式堆高车动力单元/  
Power unit of forward moving stacker
- 18 自卸式拖车动力单元/  
Dump trailer power unit
- 19 液压尾板动力单元/  
Hydraulic tailboard power unit
- 20 直流电泵/  
DC motor pump station
- 21 高空作业车电动泵/  
Aerial vehicle electric pump
- 22 移动式升降台动力单元/  
Mobile lifting platform power unit
- 23 直流双向泵动力单元/  
DC bidirectional pump power unit
- 24 直流单作用动力单元/  
DC single acting power unit
- 25 直流双作用动力单元/  
DC double acting power unit
- 26 直流微型动力单元/  
DC micro power unit
- 27 无刷电机液压动力单元/  
Brushless motor hydraulic power unit

AC series hydraulic power unit

二、交流系列液压动力单元

- 28 登车桥动力单元一/  
Boarding axle power unit 1
- 29 登车桥动力单元二/  
Boarding axle power unit 2
- 30 升降平台动力单元一/  
Lifting platform power unit 1
- 31 升降平台动力单元二/  
Lifting platform power unit 2
- 32 大剪举升机动力单元/  
Large shear lifting power unit

- 33 皮带伸缩机动力单元/  
Telescopic belt power unit
- 34 机床液压夹紧动力单元/  
Hydraulic clamping power unit of machine tool
- 35 机床打刀缸液压动力单元/  
Machine tool cutting cylinder hydraulic power unit
- 36 热熔对接焊机动力单元/  
Welding machine power unit
- 37 管材切割机动力单元/  
Pipe cutting power unit
- 38 拦蓄冲洗门动力单元/  
Power unit of storage flushing door
- 39 交流双作用动力单元/  
AC double acting power unit

Oil immersed series power unit

三、浸油系列动力单元

- 40 一体升降柱动力单元/  
Integrated lifting column power unit
- 41 一体多级缸升降柱动力单元/  
Integrated multistage cylinder lifting column power unit
- 42 浅埋升降柱动力单元/  
Shallow buried lifting column power unit
- 43 分体升降柱动力单元/  
Split lifting column power unit
- 44 分体多级缸升降柱动力单元/  
Split multistage cylinder lifting column power unit
- 45 反恐路障机动力单元/  
Anti terrorism roadblock power unit
- 46 重型反恐路障机动力单元/  
Heavy duty anti-terrorism roadblock mobility unit
- 47 浸油式双向泵动力单元/  
Oil immersed bidirectional pump power unit
- 48 浸油式双作用动力单元/  
Oil immersed double acting power unit
- 49 液压货梯静音动力单元/  
Silent power unit of hydraulic cargo elevator
- 50 停车库静音动力单元/  
Parking garage silent power unit
- 51 节能液压动力单元/  
Energy saving hydraulic power unit

Other

四、其他

- 52 动力单元配件/  
Power unit accessories
- 55 液压系统及油缸/  
Hydraulic system and oil cylinder
- 05 动力单元选型/  
Silent power unit of hydraulic cargo elevator
- 07 常用液压原理图组合/  
Oil immersed double acting power unit

企业荣誉

ENTERPRISE HONOR





生产车间  
PRODUCTION  
WORKSHOP



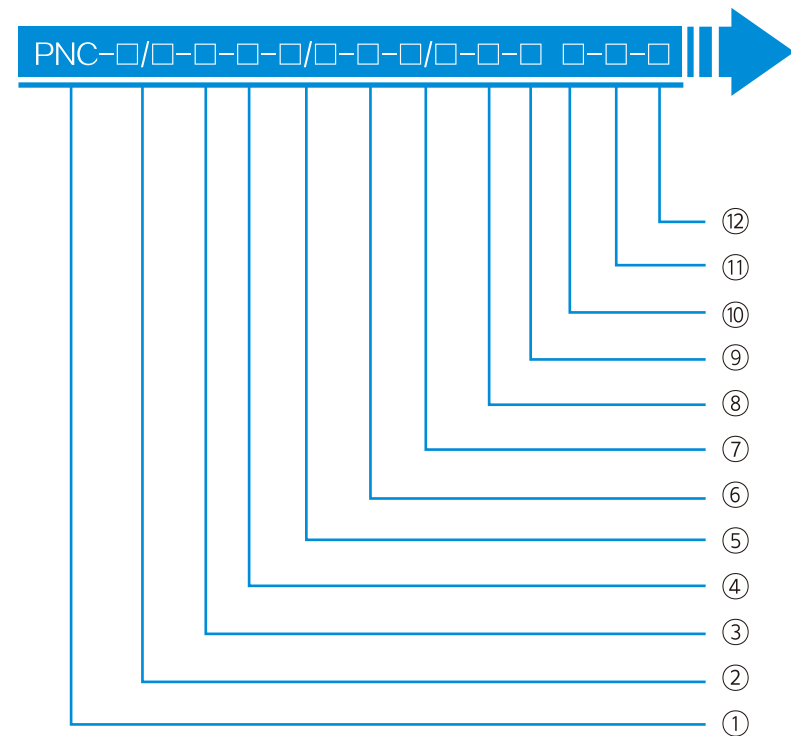
生产车间  
PRODUCTION  
WORKSHOP





## 液压动力单元型号说明

POWER UNIT ORDERING GUIDANCE



① 产品名称：液压动力单元 Product name:hydraulic power units

② 电机功率 Motor power ( KW )

直流电机 DC motor: 0.3 0.5 0.8 1.2 1.6 2.2 3 4

交流电机 AC motor: 0.3 0.55 0.75 1.1 1.5 2.2 3 4

单相 S : single phase 三相 3 : three single

默认三相电机Default three-phase motor

无刷电机Brushless motor: 0.1-4

伺服电机Servo motor: 0.1-4

无刷WS:Brushless motor 伺服SF:Servo motor

③ 电机极数 Number of motor poles

二极电机 Two pole motor : 2P

四极电机 Four pole motor : 4P

六极电机 Six pole motor : 6P

仅限交流电机选型使用/Only for AC motor selection

④ 电机电压 Motor voltage ( V )

直流电机 DC motor: D12 D24 D36 D48

交流电机 AC motor: A110 A220 A380 A440

其他规格详询工厂代表/For other specifications, please refer to the factory business

## 液压动力单元型号说明

POWER UNIT ORDERING GUIDANCE

⑤ 齿轮泵排量 Pump displacement ( cc/rev )

1组泵 / 1 series pump : 0.63 0.8 1.2 1.6 2.1 2.7 3.2 3.7 4.2 5.0 6.0 7.0 8.0 9.8

0.5组泵 / 0.5 series pump : 0.19 0.26 0.38 0.5 0.65 0.75 0.88 1.0 1.25 1.5 1.75 2.0

型号默认单向泵，双向泵表示方法

The model defaults to one-way pump , two-way pump : 0.5T/0.26

⑥ 溢流阀设定压力 Relief valve set pressure ( MPA )

根据客户需要设定，例如 Set according to customer needs, such as :16

⑦ 油箱容积与外型 Tank volume and appearance ( L )

容积 Volume : 1 1.5 2.5 3 4 5 6 8 10 15 20 30

立式安装 Vertical installation : L 卧式安装Horizontal installation : W

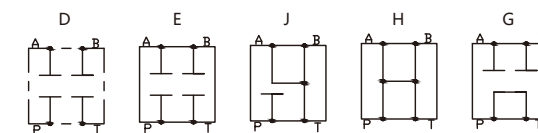
⑧ 液压原理图 详细信息见下页液压动力单元原理编号

Hydraulic schematic diagram See the hydraulic power unit principle number on the next page for details

⑨ 电磁阀电压 Electromagnetic valve voltage (V)

交流电压: A110-A220 直流电压: D12-D72

⑩ 电磁阀原理 EPrinciple of Electromagnetic Valve



⑪ 内置压力补偿阀流量 Built in pressure compensation valve flow (L/MIN)

固定流量压力补偿阀 Fixed flow pressure compensator valve : 1 2 3 4 5 6 7 8 9 10 12

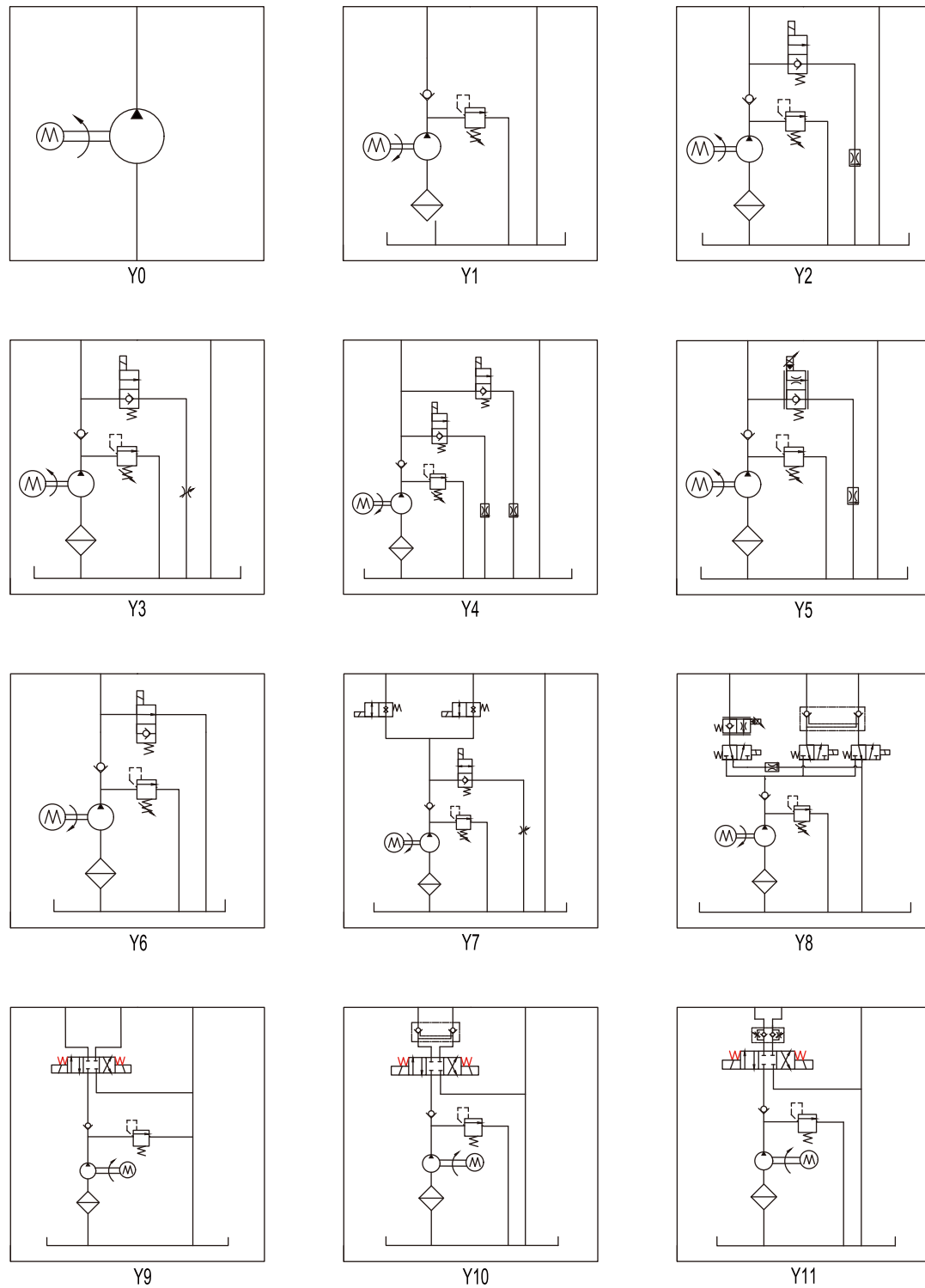
可调流量压力补偿阀 Adjustable pressrue compensation valve M10 M16

⑫ 特殊说明 Special instructions



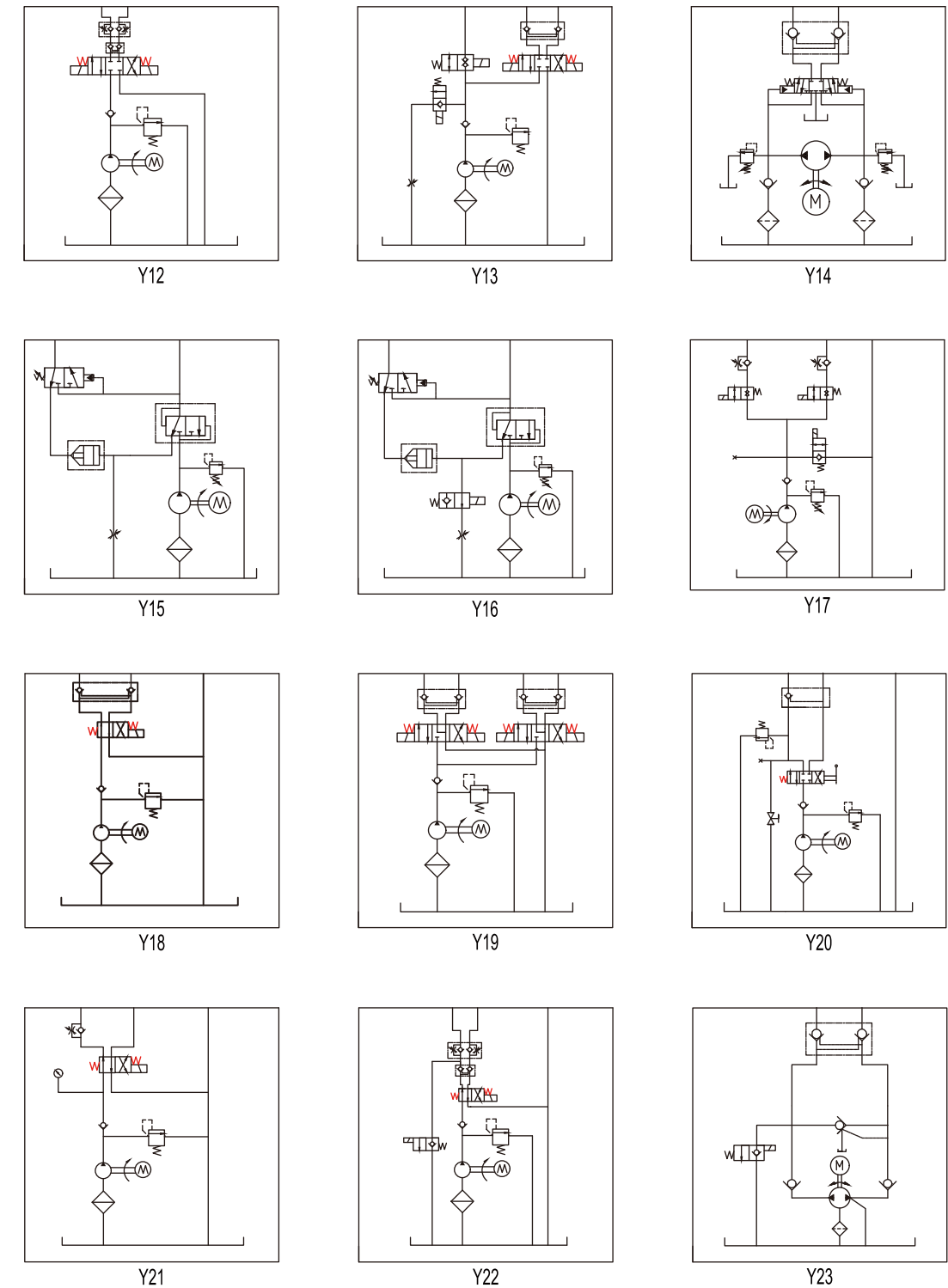
以下为我司常用液压动力单元原理图组合，我司也可以按照客户要求定制特殊的油路。具体请联系我司业务员。

The following is the schematic diagram combination of our common hydraulic power units. Our company can also customize special oil circuits according to customer requirements. Please contact our salesman for details.



以下为我司常用液压动力单元原理图组合，我司也可以按照客户要求定制特殊的油路。具体请联系我司业务员。

The following is the schematic diagram combination of our common hydraulic power units. Our company can also customize special oil circuits according to customer requirements. Please contact our salesman for details.





## 电动小金刚液压动力单元一

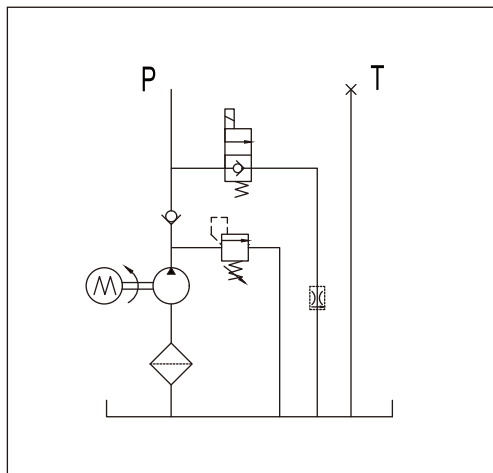
## MINI PALLET TRUCK HYDRAULIC POWER UNIT 1

此液压动力单元专为全电动托盘车所设计。由高压齿轮泵、永磁直流电机、中心阀块、插装阀、油箱集成为一体。启动电机，实现上升，打开电磁阀，实现下降。内置压力补偿节流阀控制下降速度。具有0.3-0.8KW可选电机，电压12-48V可选，有铁制和塑料油箱可供选择。

This hydraulic power unit is specially designed for all electric pallet truck. It consists of high voltage gear pump, permanent magnet DC motor and central valve block. The cartridge valve and oil tank are integrated. Start the motor to rise, open the solenoid valve to fall. The built-in pressure compensation throttle valve controls the descent speed. With 0.3-0.8kw optional motor, 12-48v optional voltage, iron and plastic oil tank for choice.



## 原理图/SCHEMATIC DIAGRAM



Y2

## 注意事项/SPECIAL NOTES

- 此动力单元为S3工作制，不可连续运转，10秒开，90秒停。
- 安装前必须保证油缸、油管、接头等液压元件无杂质黏附。
- 液压油粘度应为15-68ST，夏季推荐46号抗磨液压油，冬季推荐32号低温液压油。
- 首次启动运行系统后，应立即检查油箱中的油量是否充足，一般为油箱2/3部位。
- 系统使用第一个100小时后，应更换液压油，以后每3000小时更换一次液压油。

- The power unit is S3 working system and can not operate continuously. It starts in 10 seconds and stops in 90 seconds.
- Before installation, ensure that hydraulic components such as oil cylinder, oil pipe and joint are free of impurities.
- The viscosity of hydraulic oil shall be 15-68st. No. 46 anti-wear hydraulic oil is recommended in summer and No. 32 low temperature hydraulic oil is recommended in winter.
- After starting the operating system for the first time, check whether the oil in the oil tank is sufficient, generally 2 / 3 of the oil tank.
- After the system is used for the first 100 hours, the hydraulic oil shall be replaced, and then the hydraulic oil shall be replaced every 3000 hours.

## 产品配置/SPECIFICATIONS

型号 Model	电压 Volt	功率 Power	转速 Speed	油泵排量 Displacemet	工作压力 Pressure	油箱 Tank	电磁阀电压 Solenoid Vavle Volt
PNC-0.8-D24-0.5/0.65-18-0.7/W-Y2	24VDC	0.8KW	3400RPM	0.65CC/REV	18MPA	0.7L	24VDC
PNC-0.8-D48-0.5/0.65-18-0.7/W-Y2	48VDC		3100RPM				48VDC

说明：如需不同流量得泵、压力、电机功率等系统参数，请联系我司业务员。

Note: if you need system parameters such as pump, pressure and motor power with different flow, please contact our salesman.

## 电动小金刚液压动力单元二

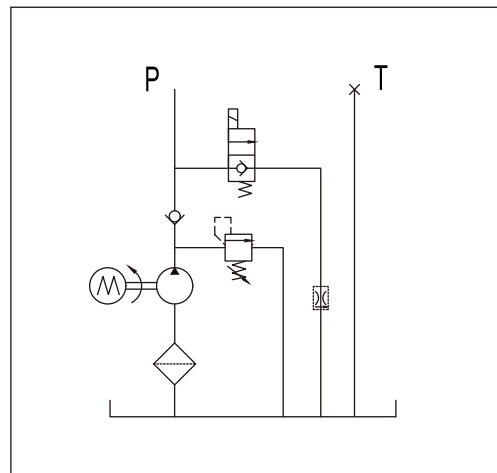
## MINI PALLET TRUCK HYDRAULIC POWER UNIT 2

此液压动力单元专为全电动托盘车所设计。由高压齿轮泵、永磁直流电机、中心阀块、插装阀、油箱集成为一体。启动电机，实现上升，打开电磁阀，实现下降。内置压力补偿节流阀控制下降速度。具有0.3-0.8KW可选电机，电压12-48V可选，有铁制和塑料油箱可供选择。

This hydraulic power unit is specially designed for all electric pallet truck. It consists of high voltage gear pump, permanent magnet DC motor and central valve block. The cartridge valve and oil tank are integrated. Start the motor to rise, open the solenoid valve to fall. The built-in pressure compensation throttle valve controls the descent speed. With 0.3-0.8kw optional motor, 12-48v optional voltage, iron and plastic oil tank for choice.



## 原理图/SCHEMATIC DIAGRAM



Y2

## 注意事项/SPECIAL NOTES

- 此动力单元为S3工作制，不可连续运转，10秒开，90秒停。
- 安装前必须保证油缸、油管、接头等液压元件无杂质黏附。
- 液压油粘度应为15-68ST，夏季推荐46号抗磨液压油，冬季推荐32号低温液压油。
- 首次启动运行系统后，应立即检查油箱中的油量是否充足，一般为油箱2/3部位。
- 系统使用第一个100小时后，应更换液压油，以后每3000小时更换一次液压油。

- The power unit is S3 working system and can not operate continuously. It starts in 10 seconds and stops in 90 seconds.
- Before installation, ensure that hydraulic components such as oil cylinder, oil pipe and joint are free of impurities.
- The viscosity of hydraulic oil shall be 15-68st. No. 46 anti-wear hydraulic oil is recommended in summer and No. 32 low temperature hydraulic oil is recommended in winter.
- After starting the operating system for the first time, check whether the oil in the oil tank is sufficient, generally 2 / 3 of the oil tank.
- After the system is used for the first 100 hours, the hydraulic oil shall be replaced, and then the hydraulic oil shall be replaced every 3000 hours.

## 产品配置/SPECIFICATIONS

型号 Model	电压 Volt	功率 Power	转速 Speed	油泵排量 Displacemet	工作压力 Pressure	油箱 Tank	电磁阀电压 Solenoid Vavle Volt
PNC-0.8-D24-0.5/1.0-13-0.7/W-Y2	24VDC	0.8KW	3400RPM	0.65CC/REV	13MPA	0.7L	24VDC
PNC-0.8-D48-0.5/0.65-13-0.7/W-Y2	48VDC		3100RPM	1.0CC/REV			48VDC

说明：如需不同流量得泵、压力、电机功率等系统参数，请联系我司业务员。

Note: if you need system parameters such as pump, pressure and motor power with different flow, please contact our salesman.



## 电动小金刚液压动力单元 三

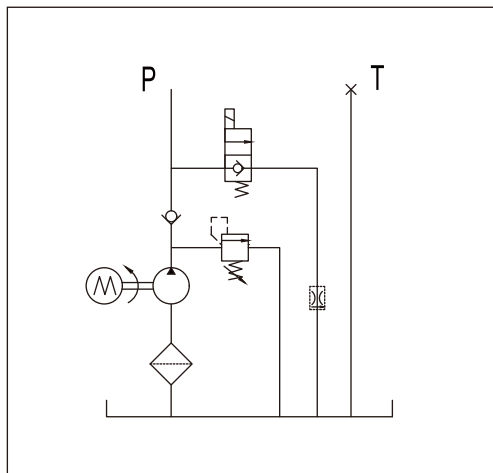
## MINI PALLET TRUCK HYDRAULIC POWER UNIT 3

此液压动力单元专为全电动托盘车所设计。由高压齿轮泵、永磁直流电机、中心阀块、插装阀、油箱集成为一体。启动电机，实现上升，打开电磁阀，实现下降。内置压力补偿节流阀控制下降速度。具有0.3-0.8KW可选电机，电压12-48V可选，有铁制和塑料油箱可供选择。

This hydraulic power unit is specially designed for all electric pallet truck. It consists of high voltage gear pump, permanent magnet DC motor and central valve block. The cartridge valve and oil tank are integrated. Start the motor to rise, open the solenoid valve to fall. The built-in pressure compensation throttle valve controls the descent speed. With 0.3-0.8kw optional motor, 12-48v optional voltage, iron and plastic oil tank for choice.



## 原理图/SCHEMATIC DIAGRAM



Y2

## 注意事项/SPECIAL NOTES

- 此动力单元为S3工作制，不可连续运转，10秒开，90秒停。
- 安装前必须保证油缸、油管、接头等液压元件无杂质黏附。
- 液压油粘度应为15-68ST，夏季推荐46号抗磨液压油，冬季推荐32号低温液压油。
- 首次启动运行系统后，应立即检查油箱中的油量是否充足，一般为油箱2/3部位。
- 系统使用第一个100小时后，应更换液压油，以后每3000小时更换一次液压油。

- The power unit is S3 working system and can not operate continuously. It starts in 10 seconds and stops in 90 seconds.
- Before installation, ensure that hydraulic components such as oil cylinder, oil pipe and joint are free of impurities.
- The viscosity of hydraulic oil shall be 15-68st. No. 46 anti-wear hydraulic oil is recommended in summer and No. 32 low temperature hydraulic oil is recommended in winter.
- After starting the operating system for the first time, check whether the oil in the oil tank is sufficient, generally 2 / 3 of the oil tank.
- After the system is used for the first 100 hours, the hydraulic oil shall be replaced, and then the hydraulic oil shall be replaced every 3000 hours.

## 产品配置/SPECIFICATIONS

型号 Model	电压 Volt	功率 Power	转速 Speed	油泵排量 Displacemet	工作压力 Pressure	油箱 Tank	电磁阀电压 Solenoid Vavle Volt
PNC-0.8-D24-0.5/0.38-23-0.5/W-Y2	24VDC	0.8KW	3400RPM	0.38CC/REV	23MPA	0.5L	24VDC
PNC-0.8-D48-0.5/0.38-23-0.5/W-Y2	48VDC		3100RPM				48VDC

说明：如需不同流量得泵、压力、电机功率等系统参数，请联系我司业务员。

Note: if you need system parameters such as pump, pressure and motor power with different flow, please contact our salesman.

## 电动小金刚液压动力单元 四

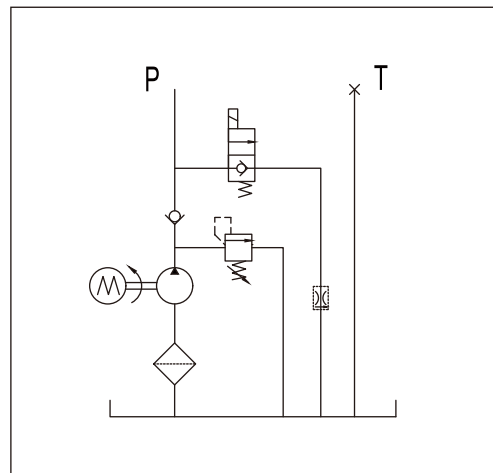
## MINI PALLET TRUCK HYDRAULIC POWER UNIT 4

此液压动力单元专为全电动托盘车所设计。由高压齿轮泵、永磁直流电机、中心阀块、插装阀、油箱集成为一体。启动电机，实现上升，打开电磁阀，实现下降。内置压力补偿节流阀控制下降速度。具有0.3-0.8KW可选电机，电压12-48V可选，有铁制和塑料油箱可供选择。

This hydraulic power unit is specially designed for all electric pallet truck. It consists of high voltage gear pump, permanent magnet DC motor and central valve block. The cartridge valve and oil tank are integrated. Start the motor to rise, open the solenoid valve to fall. The built-in pressure compensation throttle valve controls the descent speed. With 0.3-0.8kw optional motor, 12-48v optional voltage, iron and plastic oil tank for choice.



## 原理图/SCHEMATIC DIAGRAM



Y2

## 注意事项/SPECIAL NOTES

- 此动力单元为S3工作制，不可连续运转，10秒开，90秒停。
- 安装前必须保证油缸、油管、接头等液压元件无杂质黏附。
- 液压油粘度应为15-68ST，夏季推荐46号抗磨液压油，冬季推荐32号低温液压油。
- 首次启动运行系统后，应立即检查油箱中的油量是否充足，一般为油箱2/3部位。
- 系统使用第一个100小时后，应更换液压油，以后每3000小时更换一次液压油。

- The power unit is S3 working system and can not operate continuously. It starts in 10 seconds and stops in 90 seconds.
- Before installation, ensure that hydraulic components such as oil cylinder, oil pipe and joint are free of impurities.
- The viscosity of hydraulic oil shall be 15-68st. No. 46 anti-wear hydraulic oil is recommended in summer and No. 32 low temperature hydraulic oil is recommended in winter.
- After starting the operating system for the first time, check whether the oil in the oil tank is sufficient, generally 2 / 3 of the oil tank.
- After the system is used for the first 100 hours, the hydraulic oil shall be replaced, and then the hydraulic oil shall be replaced every 3000 hours.

## 产品配置/SPECIFICATIONS

型号 Model	电压 Volt	功率 Power	转速 Speed	油泵排量 Displacemet	工作压力 Pressure	油箱 Tank	电磁阀电压 Solenoid Vavle Volt
PNC-0.8-D24-0.5/0.38-23-0.4/W-Y2	24VDC	0.8KW	3400RPM	0.38CC/REV	23MPA	0.4L	24VDC
PNC-0.8-D48-0.5/0.38-23-0.4/W-Y2	48VDC		3100RPM				48VDC

说明：如需不同流量得泵、压力、电机功率等系统参数，请联系我司业务员。

Note: if you need system parameters such as pump, pressure and motor power with different flow, please contact our salesman.

## 电动小金刚液压动力单元 五

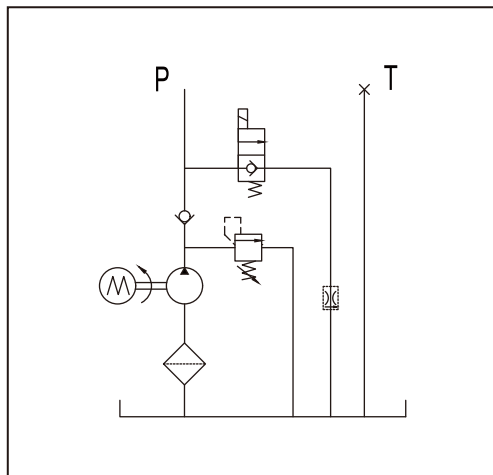
## MINI PALLET TRUCK HYDRAULIC POWER UNIT 5

此液压动力单元专为全电动搬运车所设计。由高压齿轮泵、永磁直流电机、中心阀块、插装阀、油箱集成为一体。启动电机，实现上升，打开电磁阀，实现下降。内置压力补偿节流阀控制下降速度。具有0.8-1.2KW可选电机，电压24-48V可选，有铁制和塑料油箱可供选择。

This hydraulic power unit is specially designed for all electric carrier. It is composed of high pressure gear pump, DC motor, central valve block, cartridge valve and oil tank. Start the motor to rise, open the solenoid valve to fall. The built-in pressure compensation throttle valve controls the descent speed. With 0.8-1.2kw optional motor, 24-48v optional voltage, iron and plastic oil tank for choice.



## 原理图/SCHEMATIC DIAGRAM



Y2

## 注意事项/SPECIAL NOTES

- 此动力单元为S3工作制，不可连续运转，10秒开，90秒停。
- 安装前必须保证油缸、油管、接头等液压元件无杂质黏附。
- 液压油粘度应为15-68ST，夏季推荐46号抗磨液压油，冬季推荐32号低温液压油。
- 首次启动运行系统后，应立即检查油箱中的油量是否充足，一般为油箱2/3部位。
- 系统使用第一个100小时后，应更换液压油，以后每3000小时更换一次液压油。

- The power unit is S3 working system and can not operate continuously. It starts in 10 seconds and stops in 90 seconds.
- Before installation, ensure that hydraulic components such as oil cylinder, oil pipe and joint are free of impurities.
- The viscosity of hydraulic oil shall be 15-68st. No. 46 anti-wear hydraulic oil is recommended in summer and No. 32 low temperature hydraulic oil is recommended in winter.
- After starting the operating system for the first time, check whether the oil in the oil tank is sufficient, generally 2 / 3 of the oil tank.
- After the system is used for the first 100 hours, the hydraulic oil shall be replaced, and then the hydraulic oil shall be replaced every 3000 hours.

## 产品配置/SPECIFICATIONS

型号 Model	电压 Volt	功率 Power	转速 Speed	油泵排量 Displacemet	工作压力 Pressure	油箱 Tank	电磁阀电压 Solenoid Vavle Volt
PNC-0.8-D24-0.5/0.65-16-1.5/L-Y2	24VDC	0.8KW	3400RPM	0.65CC/REV	16MPA	1.5L	24VDC
PNC-1.2-D24-0.5/0.88-16-1.5/L-Y2		1.2KW	3800RPM	0.88CC/REV			
PNC-0.8-D48-0.5/0.65-16-1.5/L-Y2	48VDC	0.8KW	3100RPM	0.65CC/REV			48VDC

说明：如需不同流量得泵、压力、电机功率等系统参数，请联系我司业务员。

Note: if you need system parameters such as pump, pressure and motor power with different flow, please contact our salesman.

## 便携式堆高车动力单元

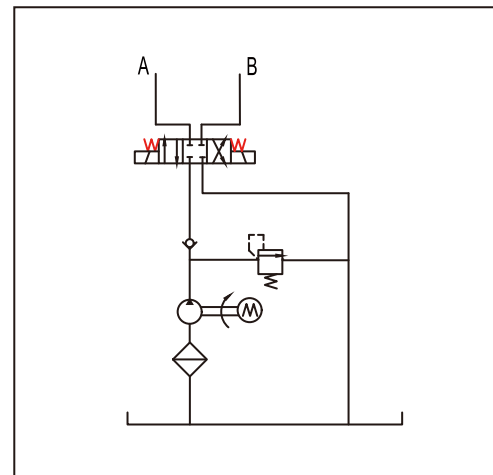
## PORTABLE STACKER POWER UNIT

此液压动力单元专为便携式堆高车所设计。由高压齿轮泵、永磁直流电机、中心阀块、插装阀、油箱集成为一体。由电机和电磁阀控制双作用油缸上升和下降，电机功率采用0.8-1.2KW，有铁制和塑料油箱可供选择。

This hydraulic power unit is specially designed for portable stacker. It is integrated by high-voltage gear pump, permanent magnet DC motor, central valve block, cartridge valve and oil tank. The rise and fall of double acting oil cylinder are controlled by motor and solenoid valve, and the motor power is 0.8-1.2kw,. There are iron and plastic fuel tanks to choose from.



## 原理图/SCHEMATIC DIAGRAM



## 注意事项/SPECIAL NOTES

- 此动力单元为S3工作制，不可连续运转，10秒开，90秒停。
- 安装前必须保证油缸、油管、接头等液压元件无杂质黏附。
- 液压油粘度应为15-68ST，夏季推荐46号抗磨液压油，冬季推荐32号低温液压油。
- 首次启动运行系统后，应立即检查油箱中的油量是否充足，一般为油箱2/3部位。
- 系统使用第一个100小时后，应更换液压油，以后每3000小时更换一次液压油。

- The power unit is S3 working system and can not operate continuously. It starts in 10 seconds and stops in 90 seconds.
- Before installation, ensure that hydraulic components such as oil cylinder, oil pipe and joint are free of impurities.
- The viscosity of hydraulic oil shall be 15-68st. No. 46 anti-wear hydraulic oil is recommended in summer and No. 32 low temperature hydraulic oil is recommended in winter.
- After starting the operating system for the first time, check whether the oil in the oil tank is sufficient, generally 2 / 3 of the oil tank.
- After the system is used for the first 100 hours, the hydraulic oil shall be replaced, and then the hydraulic oil shall be replaced every 3000 hours.

## 产品配置/SPECIFICATIONS

型号 Model	电压 Volt	功率 Power	转速 Speed	油泵排量 Displacemet	工作压力 Pressure	油箱 Tank	电磁阀电压 Solenoid Vavle Volt
PNC-0.8-D12-0.5/1.0-10-2.5/L-Y9	12VDC	0.8KW	3100RPM	1.0CC/REV	10MPA	2.5L	12VDC
PNC-1.2-D12-0.5/1.0-12-2.5/L-Y9		1.2KW	3600RPM	1.0CC/REV	12MPA		

说明：如需不同流量得泵、压力、电机功率等系统参数，请联系我司业务员。

Note: if you need system parameters such as pump, pressure and motor power with different flow, please contact our salesman.



## 全电动堆高车液压动力单元 一

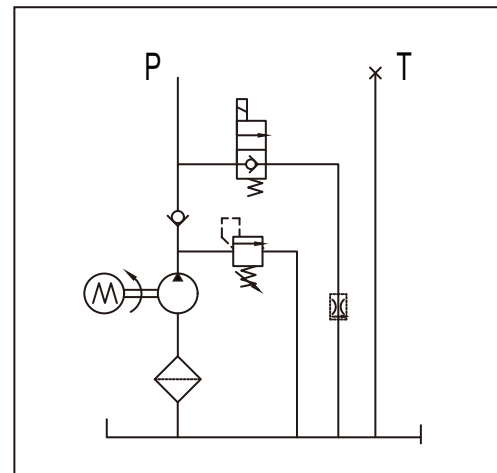
## HYDRAULIC POWER UNIT OF FULL ELECTRIC STACKER 1

此液压动力单元专为全电动堆高车所设计。由高压齿轮泵、直流碳刷电机、中心阀块、插装阀、油箱集成为一体。由电机和电磁阀控制上升和下降，具有从2.2KW-4KW电机功率可选，下降可选单速，双速，比例调速。有铁制和塑料油箱可供选择。

This hydraulic power unit is specially designed for all electric stacker. It is integrated by high-pressure gear pump, DC brush motor, central valve block, cartridge valve and oil tank. The rise and fall are controlled by motor and solenoid valve, with optional motor power from 2.2kw-4kw, single speed, double speed and proportional speed regulation. There are iron and plastic fuel tanks to choose from.



## 原理图/SCHEMATIC DIAGRAM



Y2

## 注意事项/SPECIAL NOTES

- 此动力单元为S3工作制，不可连续运转，10秒开，90秒停。
- 安装前必须保证油缸、油管、接头等液压元件无杂质黏附。
- 液压油粘度应为15-68ST，夏季推荐46号抗磨液压油，冬季推荐32号低温液压油。
- 首次启动运行系统后，应立即检查油箱中的油量是否充足，一般为油箱2/3部位。
- 系统使用第一个100小时后，应更换液压油，以后每3000小时更换一次液压油。

- The power unit is S3 working system and can not operate continuously. It starts in 10 seconds and stops in 90 seconds.
- Before installation, ensure that hydraulic components such as oil cylinder, oil pipe and joint are free of impurities.
- The viscosity of hydraulic oil shall be 15-68st. No. 46 anti-wear hydraulic oil is recommended in summer and No. 32 low temperature hydraulic oil is recommended in winter.
- After starting the operating system for the first time, check whether the oil in the oil tank is sufficient, generally 2 / 3 of the oil tank.
- After the system is used for the first 100 hours, the hydraulic oil shall be replaced, and then the hydraulic oil shall be replaced every 3000 hours.

## 产品配置/SPECIFICATIONS

型号 Model	电压 Volt	功率 Power	转速 Speed	油泵排量 Displacemet	工作压力 Pressure	油箱 Tank	电磁阀电压 Solenoid Vavle Volt
PNC-2.2-D24-1/2.7-20-5/L-Y2	24VDC	2.2KW	2600RPM	2.7CC/REV	20MPA	5L	24V
PNC-3-D24-1/3.2-20-10/L-Y4		3KW		3.2CC/REV		10L	
PNC-4-D24-1/3.5-20-10/L-Y5		4KW	3500RPM	3.5CC/REV			

说明：如需不同流量得泵、压力、电机功率等系统参数，请联系我司业务员。

Note: if you need system parameters such as pump, pressure and motor power with different flow, please contact our salesman.

## 全电动堆高车液压动力单元 二

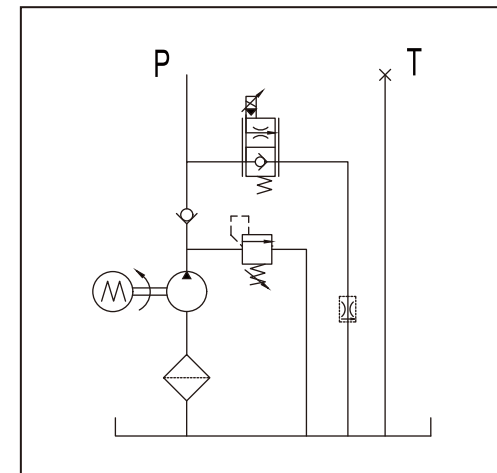
## HYDRAULIC POWER UNIT OF FULL ELECTRIC STACKER 2

此液压动力单元专为全电动堆高车所设计。由高压齿轮泵、直流碳刷电机、中心阀块、插装阀、油箱集成为一体。由电机和电磁阀控制上升和下降，具有从2.2KW-4KW电机功率可选，下降可选单速，双速，比例调速。有铁制和塑料油箱可供选择。

This hydraulic power unit is specially designed for all electric stacker. It is integrated by high-pressure gear pump, DC brush motor, central valve block, cartridge valve and oil tank. The rise and fall are controlled by motor and solenoid valve, with optional motor power from 2.2kw-4kw, single speed, double speed and proportional speed regulation. There are iron and plastic fuel tanks to choose from.



## 原理图/SCHEMATIC DIAGRAM



Y5

## 注意事项/SPECIAL NOTES

- 此动力单元为S3工作制，不可连续运转，10秒开，90秒停。
- 安装前必须保证油缸、油管、接头等液压元件无杂质黏附。
- 液压油粘度应为15-68ST，夏季推荐46号抗磨液压油，冬季推荐32号低温液压油。
- 首次启动运行系统后，应立即检查油箱中的油量是否充足，一般为油箱2/3部位。
- 系统使用第一个100小时后，应更换液压油，以后每3000小时更换一次液压油。

- The power unit is S3 working system and can not operate continuously. It starts in 10 seconds and stops in 90 seconds.
- Before installation, ensure that hydraulic components such as oil cylinder, oil pipe and joint are free of impurities.
- The viscosity of hydraulic oil shall be 15-68st. No. 46 anti-wear hydraulic oil is recommended in summer and No. 32 low temperature hydraulic oil is recommended in winter.
- After starting the operating system for the first time, check whether the oil in the oil tank is sufficient, generally 2 / 3 of the oil tank.
- After the system is used for the first 100 hours, the hydraulic oil shall be replaced, and then the hydraulic oil shall be replaced every 3000 hours.

## 产品配置/SPECIFICATIONS

型号 Model	电压 Volt	功率 Power	转速 Speed	油泵排量 Displacemet	工作压力 Pressure	油箱 Tank	电磁阀电压 Solenoid Vavle Volt
PNC-2.2-D24-1/2.7-20-5/L-Y2	24VDC 48VDC	2.2KW	2600RPM	2.7CC/REV	20MPA	5L	24V
PNC-3-D48-1/3.2-20-10/L-Y4		3KW		3.2CC/REV		10L	
PNC-4-D24-1/3.5-20-10/L-Y5		4KW	3500RPM	3.5CC/REV			

说明：如需不同流量得泵、压力、电机功率等系统参数，请联系我司业务员。

Note: if you need system parameters such as pump, pressure and motor power with different flow, please contact our salesman.

## 前移式堆高车动力单元

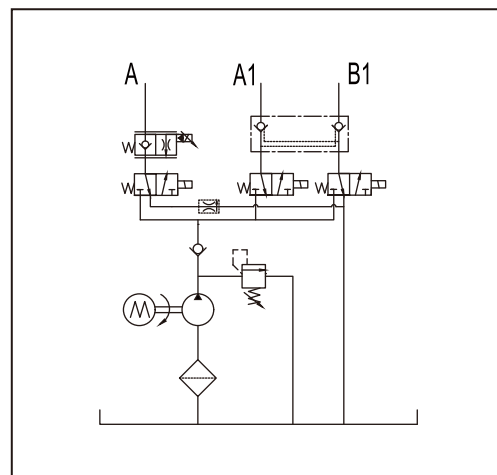
## POWER UNIT OF FORWARD MOVING STACKER

此液压动力单元专为前移式堆高车所设计。由高压齿轮泵、直流碳刷或者无刷电机、中心阀块、插装阀、油箱集成为一体。一组控制单作用油缸升降，一组控制双作用油缸前后左右四个动作。具有从2.2KW-4KW电机功率可选，下降可选单速，双速，比例调速。有铁制和塑料油箱可供选择。

This hydraulic power unit is specially designed for the forward stacker. It is integrated by high-pressure gear pump, DC carbon brush or brushless motor, central valve block, cartridge valve and oil tank. One group controls the lifting of single acting oil cylinder, and the other group controls the front, rear, left and right actions of double acting oil cylinder. It has optional motor power from 2.2kw-4kw, single speed, double speed and proportional speed regulation. There are iron and plastic fuel tanks to choose from.



## 原理图/SCHEMATIC DIAGRAM



Y8

## 注意事项/SPECIAL NOTES

- 此动力单元为S3工作制，不可连续运转，10秒开，90秒停。
- 安装前必须保证油缸、油管、接头等液压元件无杂质黏附。
- 液压油粘度应为15-68ST，夏季推荐46号抗磨液压油，冬季推荐32号低温液压油。
- 首次启动运行系统后，应立即检查油箱中的油量是否充足，一般为油箱2/3部位。
- 系统使用第一个100小时后，应更换液压油，以后每3000小时更换一次液压油。

- The power unit is S3 working system and can not operate continuously. It starts in 10 seconds and stops in 90 seconds.
- Before installation, ensure that hydraulic components such as oil cylinder, oil pipe and joint are free of impurities.
- The viscosity of hydraulic oil shall be 15-68st. No. 46 anti-wear hydraulic oil is recommended in summer and No. 32 low temperature hydraulic oil is recommended in winter.
- After starting the operating system for the first time, check whether the oil in the oil tank is sufficient, generally 2 / 3 of the oil tank.
- After the system is used for the first 100 hours, the hydraulic oil shall be replaced, and then the hydraulic oil shall be replaced every 3000 hours.

## 产品配置/SPECIFICATIONS

型号 Model	电压 Volt	功率 Power	转速 Speed	油泵排量 Displacemet	工作压力 Pressure	油箱 Tank	电磁阀电压 Solenoid Vavle Volt
PNC-3-D48-1/3.2-20-10/L-Y8	24VDC	3KW	2600RPM	3.2CC/REV	20MPA	15L	24VDC
PNC-4-D24-1/3.7-20-10/L-Y8	48VDC	4KW	3500RPM	3.7CC/REV			48VDC

说明：如需不同流量得泵、压力、电机功率等系统参数，请联系我司业务员。

Note: if you need system parameters such as pump, pressure and motor power with different flow, please contact our salesman.

## 自卸式拖车动力单元

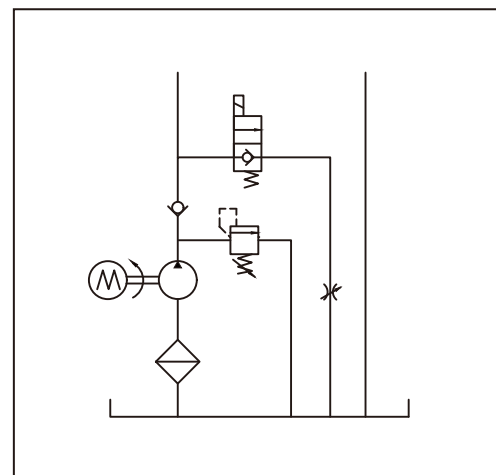
## DUMP TRAILER POWER UNIT

此液压动力单元专为自卸式拖车所设计。由高压齿轮泵、直流碳刷机、中心阀块、插装阀、油箱集成为一体。依靠电机通电上升，负载自重下降，是典型的单作用原理。系统可选内置定速平衡阀，可选外置可调流量阀。有铁制和塑料油箱可供选择。

This hydraulic power unit is specially designed for dump trailers. It is integrated by high-pressure gear pump, DC carbon brush machine, central valve block, cartridge valve and oil tank. It is a typical single action principle to rely on the rise of motor power on and the decrease of load self weight. The system can be equipped with built-in constant speed balance valve and external adjustable flow valve. There are iron and plastic fuel tanks to choose from.



## 原理图/SCHEMATIC DIAGRAM



Y3

## 注意事项/SPECIAL NOTES

- 此动力单元为S3工作制，不可连续运转，10秒开，90秒停。
- 安装前必须保证油缸、油管、接头等液压元件无杂质黏附。
- 液压油粘度应为15-68ST，夏季推荐46号抗磨液压油，冬季推荐32号低温液压油。
- 首次启动运行系统后，应立即检查油箱中的油量是否充足，一般为油箱2/3部位。
- 系统使用第一个100小时后，应更换液压油，以后每3000小时更换一次液压油。

- The power unit is S3 working system and can not operate continuously. It starts in 10 seconds and stops in 90 seconds.
- Before installation, ensure that hydraulic components such as oil cylinder, oil pipe and joint are free of impurities.
- The viscosity of hydraulic oil shall be 15-68st. No. 46 anti-wear hydraulic oil is recommended in summer and No. 32 low temperature hydraulic oil is recommended in winter.
- After starting the operating system for the first time, check whether the oil in the oil tank is sufficient, generally 2 / 3 of the oil tank.
- After the system is used for the first 100 hours, the hydraulic oil shall be replaced, and then the hydraulic oil shall be replaced every 3000 hours.

## 产品配置/SPECIFICATIONS

型号 Model	电压 Volt	功率 Power	转速 Speed	油泵排量 Displacemet	工作压力 Pressure	油箱 Tank	电磁阀电压 Solenoid Vavle Volt
PNC-1.6-D12-1/2.1-20-8/W-Y3	12VDC	1.6KW	2800RPM	2.1CC/REV	20MPA	8L	12VDC
PNC-2.2-D24-1/2.7-20-10/W-Y3	24VDC	2.2KW	2600RPM	2.7CC/REV		10L	24VDC

说明：如需不同流量得泵、压力、电机功率等系统参数，请联系我司业务员。

Note: if you need system parameters such as pump, pressure and motor power with different flow, please contact our salesman.



## 液压尾板动力单元

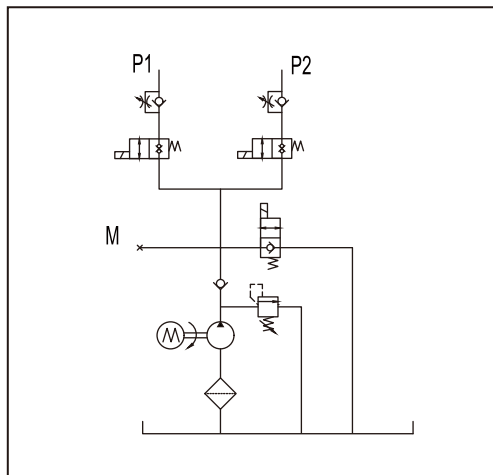
### HYDRAULIC TAILBOARD POWER UNIT

此液压动力单元专为液压尾板所设计。车辆尾板液压动力单元是用于箱式货车尾板控制的动力装置，此系列液压动力单元通过常闭电磁阀和电磁止回阀实现尾板举升、关门、下降、开门等动作，完成货物的装卸工作下降速度可通过节流阀进行调节。有12和24V电压可选。

This hydraulic power unit is specially designed for the hydraulic tail plate. The vehicle tail plate hydraulic power unit is a power unit used for the control of the tail plate of the box truck. This series of hydraulic power units realize the actions of lifting, closing, lowering and opening the tail plate through the normally closed solenoid valve and solenoid check valve, complete the loading and unloading of goods, and the lowering speed can be adjusted through the throttle valve. 12 and 24V voltages are available.



#### 原理图/SCHEMATIC DIAGRAM



Y17

#### 注意事项/SPECIAL NOTES

- 此动力单元为S3工作制，不可连续运转，10秒开，90秒停。
- 安装前必须保证油缸、油管、接头等液压元件无杂质黏附。
- 液压油粘度应为15-68ST，夏季推荐46号抗磨液压油，冬季推荐32号低温液压油。
- 首次启动运行系统后，应立即检查油箱中的油量是否充足，一般为油箱2/3部位。
- 系统使用第一个100小时后，应更换液压油，以后每3000小时更换一次液压油。

- The power unit is S3 working system and can not operate continuously. It starts in 10 seconds and stops in 90 seconds.
- Before installation, ensure that hydraulic components such as oil cylinder, oil pipe and joint are free of impurities.
- The viscosity of hydraulic oil shall be 15-68st. No. 46 anti-wear hydraulic oil is recommended in summer and No. 32 low temperature hydraulic oil is recommended in winter.
- After starting the operating system for the first time, check whether the oil in the oil tank is sufficient, generally 2 / 3 of the oil tank.
- After the system is used for the first 100 hours, the hydraulic oil shall be replaced, and then the hydraulic oil shall be replaced every 3000 hours.

#### 产品配置/SPECIFICATIONS

型号 Model	电压 Volt	功率 Power	转速 Speed	油泵排量 Displacemet	工作压力 Pressure	油箱 Tank	电磁阀电压 Solenoid Vavle Volt
PNC-1.6-D12-1/1.6-20-10/WB-Y17	12VDC	1.6KW	2800RPM	1.6CC/REV	20MPA	10L	12VDC
PNC-2.2-D24-1/2.5-20-10/WB-Y17		2.2KW	2600RPM	2.5CC/REV			24VDC

说明：如需不同流量得泵、压力、电机功率等系统参数，请联系我司业务员。

Note: if you need system parameters such as pump, pressure and motor power with different flow, please contact our salesman.

## 直流电动泵

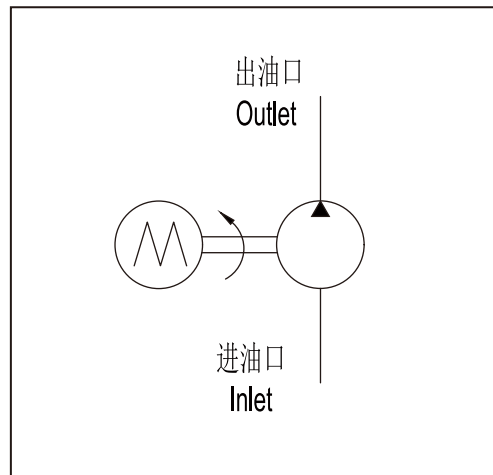
### DC MOTOR PUMP STATION

此液压泵站由1系列侧进侧出齿轮泵与4.5或者5英寸直流电机组成，性能稳定，常作为液压动力源广泛应用于各种移动设备液压系统。电压有12-48V可选。

This hydraulic pump station is composed of a series of side inlet and side outlet gear pumps and 4.5 or 5-inch DC motors. It is often used as a hydraulic power source and is widely used in the hydraulic system of various mobile equipment. The voltage can be 12-48v.



#### 原理图/SCHEMATIC DIAGRAM



Y0

#### 注意事项/SPECIAL NOTES

- 此动力单元为S3工作制，不可连续运转，10秒开，90秒停。
- 安装前必须保证油缸、油管、接头等液压元件无杂质黏附。
- 液压油粘度应为15-68ST，夏季推荐46号抗磨液压油，冬季推荐32号低温液压油。
- 首次启动运行系统后，应立即检查油箱中的油量是否充足，一般为油箱2/3部位。
- 系统使用第一个100小时后，应更换液压油，以后每3000小时更换一次液压油。

- The power unit is S3 working system and can not operate continuously. It starts in 10 seconds and stops in 90 seconds.
- Before installation, ensure that hydraulic components such as oil cylinder, oil pipe and joint are free of impurities.
- The viscosity of hydraulic oil shall be 15-68st. No. 46 anti-wear hydraulic oil is recommended in summer and No. 32 low temperature hydraulic oil is recommended in winter.
- After starting the operating system for the first time, check whether the oil in the oil tank is sufficient, generally 2 / 3 of the oil tank.
- After the system is used for the first 100 hours, the hydraulic oil shall be replaced, and then the hydraulic oil shall be replaced every 3000 hours.

#### 产品配置/SPECIFICATIONS

型号 Model	电压 Volt	功率 Power	转速 Speed	油泵排量 Displacemet	工作压力 Pressure	油箱 Tank	电磁阀电压 Solenoid Vavle Volt
PNC-1.6-D12-1/1.6-20-Y0	12VDC	1.6KW	2800RPM	1.6CC/REV	20MPA	NULL	12VDC
PNC-2.2-D24-1/2.7-20-Y0	24VDC	2.2KW	2600RPM	2.7CC/REV			24VDC
PNC-3.0-D48-1/3.2-20-Y0		3.0KW		3.2CC/REV			48VDC

说明：如需不同流量得泵、压力、电机功率等系统参数，请联系我司业务员。

Note: if you need system parameters such as pump, pressure and motor power with different flow, please contact our salesman.

## 高空作业车电动泵

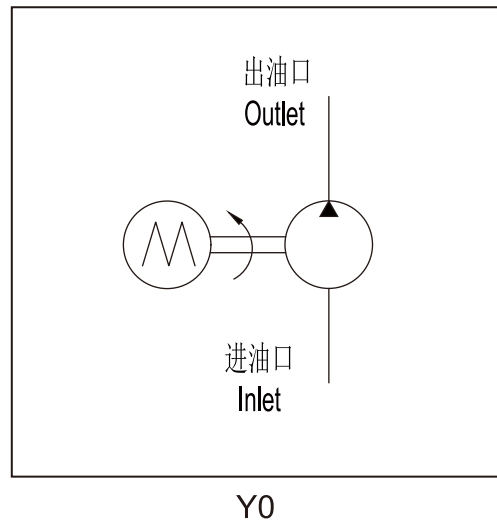
## AERIAL VEHICLE ELECTRIC PUMP

此液压泵站专为自行高空作业车设计，由2系列侧进侧出齿轮泵与大功率直流电机组成，配合进口的插装阀组使用，性能稳定，常作为液压动力源广泛应用于各种移动设备液压系统。电压有24-48V可选。

This hydraulic pump station is specially designed for self-propelled aerial work vehicle. It is composed of 2 series side inlet and side outlet gear pump and high-power DC motor. It is used with imported cartridge valve group. It has stable performance. It is often used as a hydraulic power source and is widely used in the hydraulic system of various mobile equipment. The voltage can be 24-48v.



## 原理图/SCHEMATIC DIAGRAM



## 注意事项/SPECIAL NOTES

- 此动力单元为S3工作制，不可连续运转，10秒开，90秒停。
- 安装前必须保证油缸、油管、接头等液压元件无杂质黏附。
- 液压油粘度应为15-68ST，夏季推荐46号抗磨液压油，冬季推荐32号低温液压油。
- 首次启动运行系统后，应立即检查油箱中的油量是否充足，一般为油箱2/3部位。
- 系统使用第一个100小时后，应更换液压油，以后每3000小时更换一次液压油。

- The power unit is S3 working system and can not operate continuously. It starts in 10 seconds and stops in 90 seconds.
- Before installation, ensure that hydraulic components such as oil cylinder, oil pipe and joint are free of impurities.
- The viscosity of hydraulic oil shall be 15-68st. No. 46 anti-wear hydraulic oil is recommended in summer and No. 32 low temperature hydraulic oil is recommended in winter.
- After starting the operating system for the first time, check whether the oil in the oil tank is sufficient, generally 2 / 3 of the oil tank.
- After the system is used for the first 100 hours, the hydraulic oil shall be replaced, and then the hydraulic oil shall be replaced every 3000 hours.

## 产品配置/SPECIFICATIONS

型号 Model	电压 Volt	功率 Power	转速 Speed	油泵排量 Displacemet	工作压力 Pressure	油箱 Tank	电磁阀电压 Solenoid Vavle Volt
PNC-4.5-D24-2/4.2-20-Y0	24VDC	4.5KW	2700RPM	4.2CC/REV	20MPA	NULL	24V
PNC-4.5-D48-2/4.2-20-Y0	48VDC						48V

说明：如需不同流量得泵、压力、电机功率等系统参数，请联系我司业务员。

Note: if you need system parameters such as pump, pressure and motor power with different flow, please contact our salesman.

## 移动式升降平台动力单元

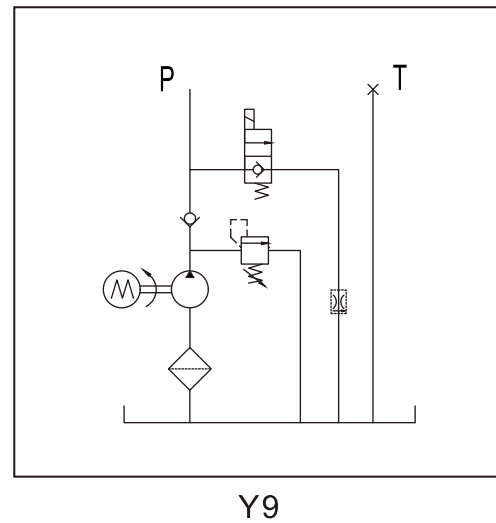
## MOBILE LIFTING PLATFORM POWER UNIT

此液压动力单元专为移动式液压升降台设计，由高压齿轮泵、永磁直流电机、中心阀块、插装阀、油箱集成为一体。启动电机，实现上升，打开电磁阀，实现下降。内置压力补偿节流阀控制下降速度。具有重量轻，安装空间小等特点，有0.8-1.6KW可选电机，电压12-24V可选，有铁制和塑料油箱可供选择。

This hydraulic power unit is specially designed for mobile hydraulic lifting table, which is integrated by high-pressure gear pump, permanent magnet DC motor, central valve block, cartridge valve and oil tank. Start the motor to rise and open the solenoid valve to fall. The built-in pressure compensation throttle valve controls the descent speed. It has the characteristics of light weight and small installation space. There are 0.8-1.6kw optional motors, 12-24V optional voltages, and iron and plastic oil tanks to choose from.



## 原理图/SCHEMATIC DIAGRAM



## 注意事项/SPECIAL NOTES

- 此动力单元为S3工作制，不可连续运转，10秒开，90秒停。
- 安装前必须保证油缸、油管、接头等液压元件无杂质黏附。
- 液压油粘度应为15-68ST，夏季推荐46号抗磨液压油，冬季推荐32号低温液压油。
- 首次启动运行系统后，应立即检查油箱中的油量是否充足，一般为油箱2/3部位。
- 系统使用第一个100小时后，应更换液压油，以后每3000小时更换一次液压油。

- The power unit is S3 working system and can not operate continuously. It starts in 10 seconds and stops in 90 seconds.
- Before installation, ensure that hydraulic components such as oil cylinder, oil pipe and joint are free of impurities.
- The viscosity of hydraulic oil shall be 15-68st. No. 46 anti-wear hydraulic oil is recommended in summer and No. 32 low temperature hydraulic oil is recommended in winter.
- After starting the operating system for the first time, check whether the oil in the oil tank is sufficient, generally 2 / 3 of the oil tank.
- After the system is used for the first 100 hours, the hydraulic oil shall be replaced, and then the hydraulic oil shall be replaced every 3000 hours.

## 产品配置/SPECIFICATIONS

型号 Model	电压 Volt	功率 Power	转速 Speed	油泵排量 Displacemet	工作压力 Pressure	油箱 Tank	电磁阀电压 Solenoid Vavle Volt
PNC-0.8-D12-0.5/0.38-20-3/L-Y2	12VDC	0.8KW	3100RPM	0.38CC/REV	20MPA	3L	12VDC
PNC-1.2-D12-0.5/0.65-20-3/L-Y2	24VDC	1.2KW	2800RPM	0.65CC/REV			24VDC
PNC-1.6-D12-1/1.6-20-3/L-Y2	48VDC	1.6KW	2600RPM	1.6CC/REV			48VDC

说明：如需不同流量得泵、压力、电机功率等系统参数，请联系我司业务员。

Note: if you need system parameters such as pump, pressure and motor power with different flow, please contact our salesman.



## 直流双向泵动力单元

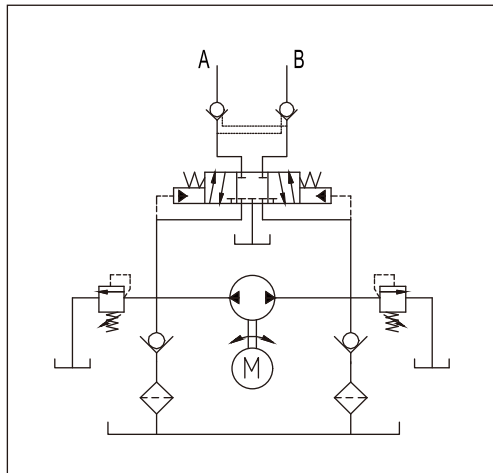
## DC BIDIRECTIONAL PUMP POWER UNIT

此动力单元由双向齿轮泵、永磁直流电机、中心块、插装阀组件、油箱等多个零部件组成，这种动力单元在没有电磁阀的情况下，依靠电机正反转实现换向的功能，这就使得该动力单元体积小巧，适用于各类布局空间较小的设备。同时该动力单元结构紧凑、性能稳定，被广泛应用于行走车辆、升降平台等设备。电机电压12-48V可选。

This power unit is composed of bidirectional gear pump, permanent magnet DC motor, center block, cartridge valve assembly, oil tank and other parts. Without solenoid valve, this power unit realizes the reversing function by relying on the forward and reverse rotation of motor, which makes the power unit compact and suitable for all kinds of equipment with small layout space. At the same time, the power unit has compact structure and stable performance, and is widely used in walking vehicles, lifting platforms and other equipment. Motor voltage 12-48v optional.



## 原理图/SCHEMATIC DIAGRAM



Y14

## 注意事项/SPECIAL NOTES

- 此动力单元为S3工作制，不可连续运转，10秒开，90秒停。
- 安装前必须保证油缸、油管、接头等液压元件无杂质黏附。
- 液压油粘度应为15-68ST，夏季推荐46号抗磨液液压油，冬季推荐32号低温液液压油。
- 首次启动运行系统后，应立即检查油箱中的油量是否充足，一般为油箱2/3部位。
- 系统使用第一个100小时后，应更换液液压油，以后每3000小时更换一次液液压油。

- The power unit is S3 working system and can not operate continuously. It starts in 10 seconds and stops in 90 seconds.
- Before installation, ensure that hydraulic components such as oil cylinder, oil pipe and joint are free of impurities.
- The viscosity of hydraulic oil shall be 15-68st. No. 46 anti-wear hydraulic oil is recommended in summer and No. 32 low temperature hydraulic oil is recommended in winter.
- After starting the operating system for the first time, check whether the oil in the oil tank is sufficient, generally 2 / 3 of the oil tank.
- After the system is used for the first 100 hours, the hydraulic oil shall be replaced, and then the hydraulic oil shall be replaced every 3000 hours.

## 产品配置/SPECIFICATIONS

型号 Model	电压 Volt	功率 Power	转速 Speed	油泵排量 Displacemet	工作压力 Pressure	油箱 Tank	电磁阀电压 Solenoid Vavle Volt
PNC-0.5-D12-0.5T/0.65-14-1/L-Y14	12VDC	0.5KW	2800RPM	0.65CC/REV	14MPA	1L	12VDC
PNC-0.8-D24-0.5T/1.0-14-3/W-Y14	24VDC	0.8KW	3100RPM	1.0CC/REV		3L	24VDC
PNC-1.1-D24-0.5T/1.0-14-3/W-Y14	48VDC						48VDC

说明：如需不同流量得泵、压力、电机功率等系统参数，请联系我司业务员。

Note: if you need system parameters such as pump, pressure and motor power with different flow, please contact our salesman.

## 直流单作用动力单元

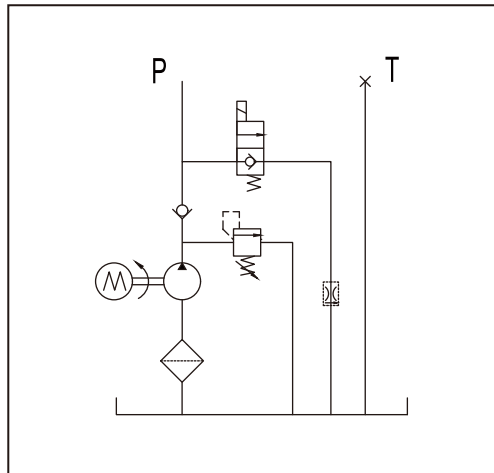
## MOBILE LIFTING PLATFORM POWER UNIT

此液压力动力单元由高压齿轮泵、直流电机、中心阀块、插装阀、油箱集成为一体。一般适用于双作用液压缸，可叠加液压锁，调速阀实现各种功能，通过电磁阀实现换向，整体性能稳定，广泛适用于汽车、园林机械、物流设备等。有0.3-4KW可选电机，电压12-48V可选，有铁制和塑料油箱可供选择。

The hydraulic power unit is integrated by high-pressure gear pump, DC motor, central valve block, cartridge valve and oil tank. It is generally applicable to double acting hydraulic cylinder, can stack hydraulic lock, speed regulating valve to realize various functions, and realize commutation through solenoid valve. The overall performance is stable. It is widely applicable to automobile, garden machinery, logistics equipment, etc. There are 0.3-4kw optional motors, 12-48v optional voltages, and iron and plastic oil tanks to choose from.



## 原理图/SCHEMATIC DIAGRAM



Y2

## 注意事项/SPECIAL NOTES

- 此动力单元为S3工作制，不可连续运转，10秒开，90秒停。
- 安装前必须保证油缸、油管、接头等液压元件无杂质黏附。
- 液压油粘度应为15-68ST，夏季推荐46号抗磨液液压油，冬季推荐32号低温液液压油。
- 首次启动运行系统后，应立即检查油箱中的油量是否充足，一般为油箱2/3部位。
- 系统使用第一个100小时后，应更换液液压油，以后每3000小时更换一次液液压油。

- The power unit is S3 working system and can not operate continuously. It starts in 10 seconds and stops in 90 seconds.
- Before installation, ensure that hydraulic components such as oil cylinder, oil pipe and joint are free of impurities.
- The viscosity of hydraulic oil shall be 15-68st. No. 46 anti-wear hydraulic oil is recommended in summer and No. 32 low temperature hydraulic oil is recommended in winter.
- After starting the operating system for the first time, check whether the oil in the oil tank is sufficient, generally 2 / 3 of the oil tank.
- After the system is used for the first 100 hours, the hydraulic oil shall be replaced, and then the hydraulic oil shall be replaced every 3000 hours.

## 产品配置/SPECIFICATIONS

型号 Model	电压 Volt	功率 Power	转速 Speed	油泵排量 Displacemet	工作压力 Pressure	油箱 Tank	电磁阀电压 Solenoid Vavle Volt
PNC-1.6-D12-1/1.6-20-5/L-Y2	12VDC	1.6KW	2800RPM	1.6CC/REV	18MPA	5L	12VDC
PNC-2.2-D24-1/2.7-20-6/L-Y2	24VDC	2.2KW	2600RPM	2.7CC/REV		6L	24VDC
PNC-3.0-D48-1/3.2-20-8/L-Y2	48VDC	3.0KW		3.2CC/REV		8L	48VDC

说明：如需不同流量得泵、压力、电机功率等系统参数，请联系我司业务员。

Note: if you need system parameters such as pump, pressure and motor power with different flow, please contact our salesman.

## 直流双作用动力单元

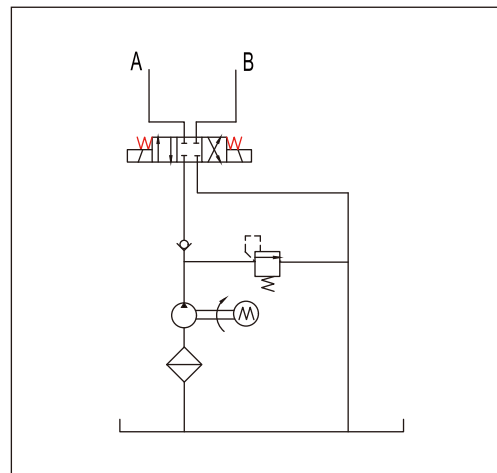
## DC BIDIRECTIONAL PUMP POWER UNIT

此液压动力单元由高压齿轮泵、直流电机、中心阀块、插装阀、油箱集成为一体。一般适用于双作用液压缸，可叠加液压锁，调速阀实现各种功能，通过电磁阀实现换向，整体性能稳定，广泛适用于汽车、园林机械、物流设备等。有0.3-4KW可选电机，电压12-48V可选，有铁制和塑料油箱可供选择。

This power unit is composed of bidirectional gear pump, permanent magnet DC motor, center block, cartridge valve assembly, oil tank and other parts. Without solenoid valve, this power unit realizes the reversing function by relying on the forward and reverse rotation of motor, which makes the power unit compact and suitable for all kinds of equipment with small layout space. At the same time, the power unit has compact structure and stable performance, and is widely used in walking vehicles, lifting platforms and other equipment. Motor voltage 12-48v optional.



## 原理图/SCHEMATIC DIAGRAM



Y9

## 注意事项/SPECIAL NOTES

- 此动力单元为S3工作制，不可连续运转，10秒开，90秒停。
- 安装前必须保证油缸、油管、接头等液压元件无杂质黏附。
- 液压油粘度应为15-68ST，夏季推荐46号抗磨液压油，冬季推荐32号低温液压油。
- 首次启动运行系统后，应立即检查油箱中的油量是否充足，一般为油箱2/3部位。
- 系统使用第一个100小时后，应更换液压油，以后每3000小时更换一次液压油。

- The power unit is S3 working system and can not operate continuously. It starts in 10 seconds and stops in 90 seconds.
- Before installation, ensure that hydraulic components such as oil cylinder, oil pipe and joint are free of impurities.
- The viscosity of hydraulic oil shall be 15-68st. No. 46 anti-wear hydraulic oil is recommended in summer and No. 32 low temperature hydraulic oil is recommended in winter.
- After starting the operating system for the first time, check whether the oil in the oil tank is sufficient, generally 2 / 3 of the oil tank.
- After the system is used for the first 100 hours, the hydraulic oil shall be replaced, and then the hydraulic oil shall be replaced every 3000 hours.

## 产品配置/SPECIFICATIONS

型号 Model	电压 Volt	功率 Power	转速 Speed	油泵排量 Displacemet	工作压力 Pressure	油箱 Tank	电磁阀电压 Solenoid Vavle Volt
PNC-1.6-D12-1/1.6-20-5/L-Y9	12VDC	1.6KW	2800RPM	1.6CC/REV	18MPA	5L	12VDC
PNC-2.2-D24-1/2.7-20-6/L-Y9	24VDC	2.2KW	2600RPM	2.7CC/REV		6L	24VDC
PNC-3.0-D48-1/3.2-20-8/L-Y9	48VDC	3.0KW		3.2CC/REV		8L	48VDC

说明：如需不同流量得泵、压力、电机功率等系统参数，请联系我司业务员。

Note: if you need system parameters such as pump, pressure and motor power with different flow, please contact our salesman.

## 直流微型动力单元

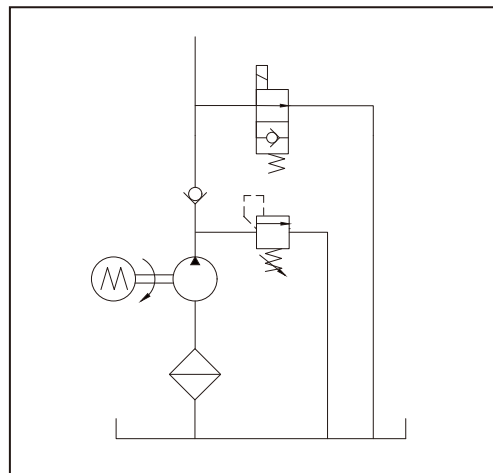
## DC MICRO POWER UNIT

此液压动力单元由高压齿轮泵、直流电机、中心阀块、插装阀、油箱集成为一体。一般适用于双作用液压缸，采用插装式电磁换向阀实现液压缸的往复工作。由于体积小，易安装，整体性能稳定，因此广泛应用于船舶、汽车、园林机械、物流设备等。有0.3-0.5KW可选电机，电压12-48V可选，有铁制和塑料油箱可供选择。

The hydraulic power unit is integrated by high-pressure gear pump, DC motor, central valve block, cartridge valve and oil tank. It is generally applicable to double acting hydraulic cylinder, and the plug-in electromagnetic directional valve is used to realize the reciprocating work of hydraulic cylinder. Because of its small size, easy installation and stable overall performance, it is widely used in ships, automobiles, garden machinery, logistics equipment, etc. There are 0.3-5kw optional motors, 12-48v optional voltages, and iron and plastic oil tanks to choose from.



## 原理图/SCHEMATIC DIAGRAM



Y6

## 注意事项/SPECIAL NOTES

- 此动力单元为S3工作制，不可连续运转，10秒开，90秒停。
- 安装前必须保证油缸、油管、接头等液压元件无杂质黏附。
- 液压油粘度应为15-68ST，夏季推荐46号抗磨液压油，冬季推荐32号低温液压油。
- 首次启动运行系统后，应立即检查油箱中的油量是否充足，一般为油箱2/3部位。
- 系统使用第一个100小时后，应更换液压油，以后每3000小时更换一次液压油。

- The power unit is S3 working system and can not operate continuously. It starts in 10 seconds and stops in 90 seconds.
- Before installation, ensure that hydraulic components such as oil cylinder, oil pipe and joint are free of impurities.
- The viscosity of hydraulic oil shall be 15-68st. No. 46 anti-wear hydraulic oil is recommended in summer and No. 32 low temperature hydraulic oil is recommended in winter.
- After starting the operating system for the first time, check whether the oil in the oil tank is sufficient, generally 2 / 3 of the oil tank.
- After the system is used for the first 100 hours, the hydraulic oil shall be replaced, and then the hydraulic oil shall be replaced every 3000 hours.

## 产品配置/SPECIFICATIONS

型号 Model	电压 Volt	功率 Power	转速 Speed	油泵排量 Displacemet	工作压力 Pressure	油箱 Tank	电磁阀电压 Solenoid Vavle Volt
PNC-0.3-D12-0.5/0.19-14-0.4/W-Y6	12VDC	0.3KW	3000RPM	0.19CC/REV	14MPA	1L	12VDC
PNC-0.3-D24-0.5/0.19-14-0.4/W-Y6	24VDC			0.26CC/REV			24VDC
PNC-0.5-D48-0.5/0.38-14-0.4/W-Y6	48VDC	0.5KW	2800RPM	0.38CC/REV			48VDC

说明：如需不同流量得泵、压力、电机功率等系统参数，请联系我司业务员。

Note: if you need system parameters such as pump, pressure and motor power with different flow, please contact our salesman.



## 无刷电机液压动力单元

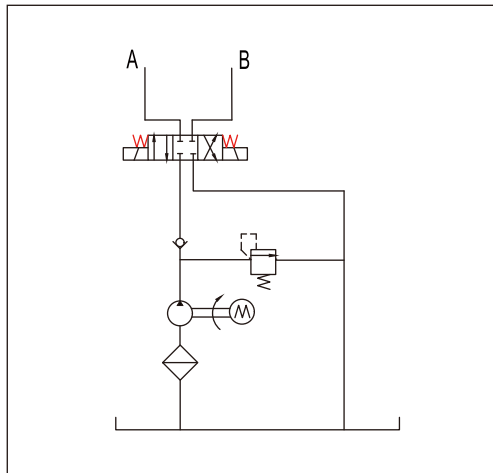
## BRUSHLESS MOTOR HYDRAULIC POWER UNIT

此液压动力单元采用无刷电机控制，根据功率大小可分为外置驱动和内置驱动，由高压齿轮泵、直流无刷电机、中心阀块、插装阀、油箱集成为一体。由电机和电磁阀控制上升和下降，具有从0.1KW-4KW电机功率可选，电压12-72V可选，下降可选单速，双速，比例调速。有铁制和塑料油箱可供选择。

This hydraulic power unit is controlled by a brushless motor and can be divided into external and internal drives based on power. It is integrated with a high-pressure gear pump, a DC brushless motor, a central valve block, a plug-in valve, and an oil tank. Controlled by a motor and solenoid valve for ascending and descending, with optional motor power ranging from 0.1KW-4KW, voltage ranging from 12-72V, and descending options for single speed, dual speed, and proportional speed regulation. There are iron and plastic fuel tanks to choose from.



## 原理图/SCHEMATIC DIAGRAM



Y9

## 注意事项/SPECIAL NOTES

- 此动力单元为S3工作制，不可连续运转，10秒开，90秒停。
- 安装前必须保证油缸、油管、接头等液压元件无杂质黏附。
- 液压油粘度应为15-68ST，夏季推荐46号抗磨液液压油，冬季推荐32号低温液液压油。
- 首次启动运行系统后，应立即检查油箱中的油量是否充足，一般为油箱2/3部位。
- 系统使用第一个100小时后，应更换液液压油，以后每3000小时更换一次液液压油。

- The power unit is S3 working system and can not operate continuously. It starts in 10 seconds and stops in 90 seconds.
- Before installation, ensure that hydraulic components such as oil cylinder, oil pipe and joint are free of impurities.
- The viscosity of hydraulic oil shall be 15-68st. No. 46 anti-wear hydraulic oil is recommended in summer and No. 32 low temperature hydraulic oil is recommended in winter.
- After starting the operating system for the first time, check whether the oil in the oil tank is sufficient, generally 2 / 3 of the oil tank.
- After the system is used for the first 100 hours, the hydraulic oil shall be replaced, and then the hydraulic oil shall be replaced every 3000 hours.

## 产品配置/SPECIFICATIONS

型号 Model	电压 Volt	功率 Power	转速 Speed	油泵排量 Displacemet	工作压力 Pressure	油箱 Tank	电磁阀电压 Solenoid Vavle Volt
PNC-0.3/WS-D12-1/0.38-16-3/W-Y2	12VDC	0.3KW	2800RPM	0.38CC/REV	16MPA	3L	12VDC
PNC-1.5/WS-D24-1/2.1-16-6/W-Y9	24VDC	1.5KW	2600RPM	2.1CC/REV		6L	24VDC
PNC-4/WS-D48-1/3.2-16-15/L-Y12	48VDC	4KW		3.2CC/REV		15L	48VDC

说明：如需不同流量得泵、压力、电机功率等系统参数，请联系我司业务员。

Note: if you need system parameters such as pump, pressure and motor power with different flow, please contact our salesman.

## 登车桥动力单元 一

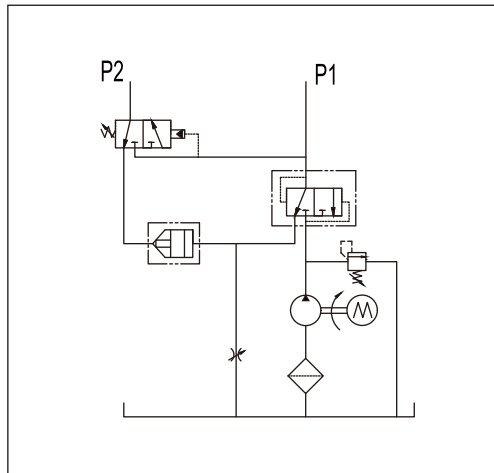
## BOARDING AXLE POWER UNIT 1

此液压动力单元专为固定式登车桥设计，由高压齿轮泵、交流电机、中心阀块、插装阀、油箱集成为一体。启动电机，实现主板上上升，当主板压力达到顺序阀设计压力后，打开唇板。主板和唇板的下降由自重控制。可调主板的下降速度，使下降速度在可靠的范围内。有0.75-1.5KW可选电机，电压220-380V可选，有铁制和塑料油箱可供选择。

This hydraulic power unit is specially designed for fixed boarding axle and is integrated by high-pressure gear pump, AC motor, central valve block, cartridge valve and oil tank. Start the motor to realize the rise of the main board. When the pressure of the main board reaches the design pressure of the sequence valve, open the lip plate. The lowering of main board and lip is controlled by self weight. The descending speed of the main board can be adjusted to make the descending speed within a reliable range. There are 0.75-1.5kw optional motors, 220-380v optional voltages, and iron and plastic oil tanks to choose from.



## 原理图/SCHEMATIC DIAGRAM



Y15

## 注意事项/SPECIAL NOTES

- 此动力单元为S3工作制，不可连续运转，10秒开，90秒停。
- 安装前必须保证油缸、油管、接头等液压元件无杂质黏附。
- 液压油粘度应为15-68ST，夏季推荐46号抗磨液液压油，冬季推荐32号低温液液压油。
- 首次启动运行系统后，应立即检查油箱中的油量是否充足，一般为油箱2/3部位。
- 系统使用第一个100小时后，应更换液液压油，以后每3000小时更换一次液液压油。

- The power unit is S3 working system and can not operate continuously. It starts in 10 seconds and stops in 90 seconds.
- Before installation, ensure that hydraulic components such as oil cylinder, oil pipe and joint are free of impurities.
- The viscosity of hydraulic oil shall be 15-68st. No. 46 anti-wear hydraulic oil is recommended in summer and No. 32 low temperature hydraulic oil is recommended in winter.
- After starting the operating system for the first time, check whether the oil in the oil tank is sufficient, generally 2 / 3 of the oil tank.
- After the system is used for the first 100 hours, the hydraulic oil shall be replaced, and then the hydraulic oil shall be replaced every 3000 hours.

## 产品配置/SPECIFICATIONS

型号 Model	电压 Volt	功率 Power	转速 Speed	油泵排量 Displacemet	工作压力 Pressure	油箱 Tank	电磁阀电压 Solenoid Vavle Volt
PNC-0.75-A380-2P-1/1.6-13-5/W-Y15	380VAC	0.75KW	2800RPM	1.6CC/REV	13MPA	5L	NULL
PNC-1.1-A220/S-4P-1/3.2-13-5/W-Y15	220VAC	1.1KW	1400RPM	3.2CC/REV		6L	
PNC-1.1-A380-4P-1/3.2-13-6/W-Y15	380VAC			3.2CC/REV			

说明：如需不同流量得泵、压力、电机功率等系统参数，请联系我司业务员。

Note: if you need system parameters such as pump, pressure and motor power with different flow, please contact our salesman.

## 登车桥动力单元 二

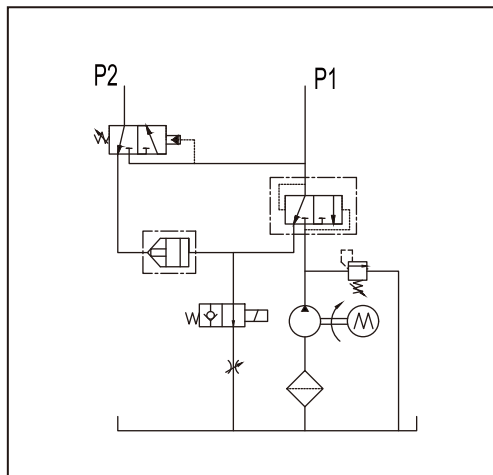
### BOARDING AXLE POWER UNIT 2

此液压动力单元专为固定式登车桥设计，由高压齿轮泵、交流电机、中心阀块、插装阀、油箱集成为一体。启动电机，实现主板上升，当主板压力达到顺序阀设计压力后，打开唇板。主板和唇板的下降由自重控制，增加电磁阀功能可实现任意位置停止。可调主板的下降速度，使下降速度在可靠的范围内。有0.75-1.5KW可选电机，电压220-380V可选，有铁制和塑料油箱可供选择。

This hydraulic power unit is specially designed for fixed boarding axle and is integrated by high-pressure gear pump, AC motor, central valve block, cartridge valve and oil tank. Start the motor to realize the rise of the main board. When the pressure of the main board reaches the design pressure of the sequence valve, open the lip plate. The lowering of the main board and the lip plate is controlled by the self weight, and the stop at any position can be realized by adding the solenoid valve function. The descending speed of the main board can be adjusted to make the descending speed within a reliable range. There are 0.75-1.5kw optional motors, 220-380v optional voltages, and iron and plastic oil tanks to choose from.



#### 原理图/SCHEMATIC DIAGRAM



Y16

#### 注意事项/SPECIAL NOTES

- 此动力单元为S3工作制，不可连续运转，10秒开，90秒停。
- 安装前必须保证油缸、油管、接头等液压元件无杂质黏附。
- 液压油粘度应为15-68ST，夏季推荐46号抗磨液压油，冬季推荐32号低温液压油。
- 首次启动运行系统后，应立即检查油箱中的油量是否充足，一般为油箱2/3部位。
- 系统使用第一个100小时后，应更换液压油，以后每3000小时更换一次液压油。

- The power unit is S3 working system and can not operate continuously. It starts in 10 seconds and stops in 90 seconds.
- Before installation, ensure that hydraulic components such as oil cylinder, oil pipe and joint are free of impurities.
- The viscosity of hydraulic oil shall be 15-68st. No. 46 anti-wear hydraulic oil is recommended in summer and No. 32 low temperature hydraulic oil is recommended in winter.
- After starting the operating system for the first time, check whether the oil in the oil tank is sufficient, generally 2 / 3 of the oil tank.
- After the system is used for the first 100 hours, the hydraulic oil shall be replaced, and then the hydraulic oil shall be replaced every 3000 hours.

#### 产品配置/SPECIFICATIONS

型号 Model	电压 Volt	功率 Power	转速 Speed	油泵排量 Displacemet	工作压力 Pressure	油箱 Tank	电磁阀电压 Solenoid Vavle Volt
PNC-0.75-A380-2P-1/1.6-13-5/W-Y16	380VAC	0.75KW	2800RPM	1.6CC/REV	13MPA	5L	24VDC
PNC-1.1-A220/S-4P-1/3.2-13-5/W-Y16	220VAC	1.1KW	1400RPM	3.2CC/REV		6L	220VAC
PNC-1.1-A380-2P-1/3.2-13-6/W-Y16	380VAC			3.2CC/REV			

说明：如需不同流量得泵、压力、电机功率等系统参数，请联系我司业务员。

Note: if you need system parameters such as pump, pressure and motor power with different flow, please contact our salesman.

## 升降平台动力单元 一

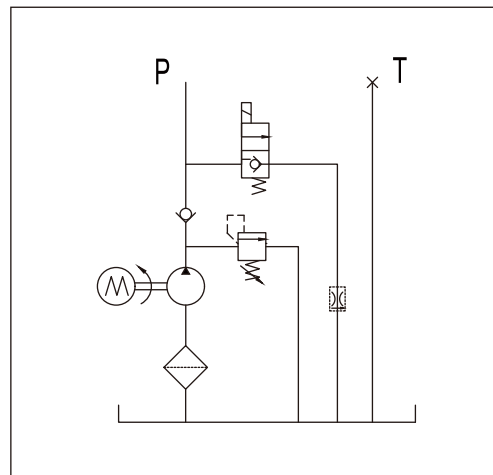
### LIFTING PLATFORM POWER UNIT 1

此液压动力单元专为液压升降平台设计，由高压齿轮泵、交流电机、中心阀块、插装阀、油箱集成为一体。启动电机，实现平台上升，下降打开电磁阀依靠自重下降，内置压力补偿阀，可实现空载与负载匀速下降。有0.35-4KW可选电机，电压220-380V可选，有铁制和塑料油箱可供选择。

The hydraulic power unit is specially designed for the hydraulic lifting platform and is integrated by high-pressure gear pump, AC motor, central valve block, cartridge valve and oil tank. Start the motor to realize the rise and fall of the platform. Open the solenoid valve to fall by self weight. The built-in pressure compensation valve can realize the uniform drop of no-load and load. There are 0.35-4kw optional motors, 220-380v optional voltages, and iron and plastic oil tanks to choose from.



#### 原理图/SCHEMATIC DIAGRAM



Y2

#### 注意事项/SPECIAL NOTES

- 此动力单元为S3工作制，不可连续运转，10秒开，90秒停。
- 安装前必须保证油缸、油管、接头等液压元件无杂质黏附。
- 液压油粘度应为15-68ST，夏季推荐46号抗磨液压油，冬季推荐32号低温液压油。
- 首次启动运行系统后，应立即检查油箱中的油量是否充足，一般为油箱2/3部位。
- 系统使用第一个100小时后，应更换液压油，以后每3000小时更换一次液压油。

- The power unit is S3 working system and can not operate continuously. It starts in 10 seconds and stops in 90 seconds.
- Before installation, ensure that hydraulic components such as oil cylinder, oil pipe and joint are free of impurities.
- The viscosity of hydraulic oil shall be 15-68st. No. 46 anti-wear hydraulic oil is recommended in summer and No. 32 low temperature hydraulic oil is recommended in winter.
- After starting the operating system for the first time, check whether the oil in the oil tank is sufficient, generally 2 / 3 of the oil tank.
- After the system is used for the first 100 hours, the hydraulic oil shall be replaced, and then the hydraulic oil shall be replaced every 3000 hours.

#### 产品配置/SPECIFICATIONS

型号 Model	电压 Volt	功率 Power	转速 Speed	油泵排量 Displacemet	工作压力 Pressure	油箱 Tank	电磁阀电压 Solenoid Vavle Volt
PNC-1.1-A380-1/2.1-18-3/W-Y2-4	380VAC	1.1KW	1400RPM	2.1CC/REV	18MPA	3L	24VDC
PNC-1.1/S-A220-1/2.1-18-3/W-Y2-4	220VAC						220VAC

说明：如需不同流量得泵、压力、电机功率等系统参数，请联系我司业务员。

Note: if you need system parameters such as pump, pressure and motor power with different flow, please contact our salesman.



## 升降平台动力单元 二

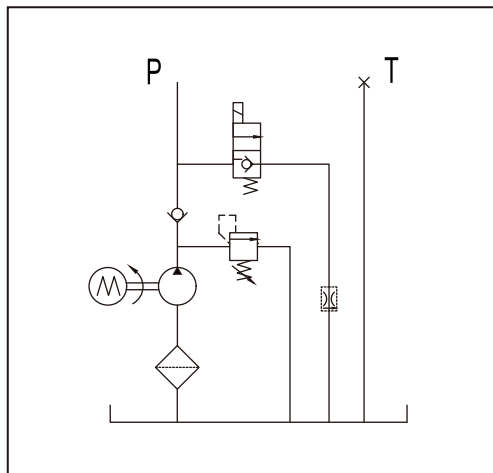
### LIFTING PLATFORM POWER UNIT 2

此液压动力单元专为液压升降平台设计，由高压齿轮泵、交流电机、中心阀块、插装阀、油箱集成为一体。启动电机，实现平台上升，下降打开电磁阀依靠自重下降，内置压力补偿阀，可实现空载与负载匀速下降。有0.35-4KW可选电机，电压220-380V可选，有铁制和塑料油箱可供选择。

The hydraulic power unit is specially designed for the hydraulic lifting platform and is integrated by high-pressure gear pump, AC motor, central valve block, cartridge valve and oil tank. Start the motor to realize the rise and fall of the platform. Open the solenoid valve to fall by self weight. The built-in pressure compensation valve can realize the uniform drop of no-load and load. There are 0.35-4kw optional motors, 220-380v optional voltages, and iron and plastic oil tanks to choose from.



#### 原理图/SCHEMATIC DIAGRAM



Y2

#### 注意事项/SPECIAL NOTES

- 此动力单元为S3工作制，不可连续运转，10秒开，90秒停。
- 安装前必须保证油缸、油管、接头等液压元件无杂质黏附。
- 液压油粘度应为15-68ST，夏季推荐46号抗磨液压油，冬季推荐32号低温液压油。
- 首次启动运行系统后，应立即检查油箱中的油量是否充足，一般为油箱2/3部位。
- 系统使用第一个100小时后，应更换液压油，以后每3000小时更换一次液压油。

- The power unit is S3 working system and can not operate continuously. It starts in 10 seconds and stops in 90 seconds.
- Before installation, ensure that hydraulic components such as oil cylinder, oil pipe and joint are free of impurities.
- The viscosity of hydraulic oil shall be 15-68st. No. 46 anti-wear hydraulic oil is recommended in summer and No. 32 low temperature hydraulic oil is recommended in winter.
- After starting the operating system for the first time, check whether the oil in the oil tank is sufficient, generally 2 / 3 of the oil tank.
- After the system is used for the first 100 hours, the hydraulic oil shall be replaced, and then the hydraulic oil shall be replaced every 3000 hours.

#### 产品配置/SPECIFICATIONS

型号 Model	电压 Volt	功率 Power	转速 Speed	油泵排量 Displacemet	工作压力 Pressure	油箱 Tank	电磁阀电压 Solenoid Vavle Volt
PNC-1.1-A380-1/2.1-18-3/W-Y2-4	380VAC	1.1KW	1400RPM	2.1CC/REV	18MPA	3L	24VDC
PNC-1.1/S-A220-1/2.1-18-3/W-Y2-4	220VAC						
PNC-1.5-A380-1/3.2-18-6/W-Y2-6	380VAC	1.5KW		3.2CC/REV		6L	220VAC
PNC-2.2-A380-1/4.8-18-6/W-Y2-8		2.2KW		4.8CC/REV			

说明：如需不同流量得泵、压力、电机功率等系统参数，请联系我司业务员。

Note: if you need system parameters such as pump, pressure and motor power with different flow, please contact our salesman.

## 大剪举升机动力单元

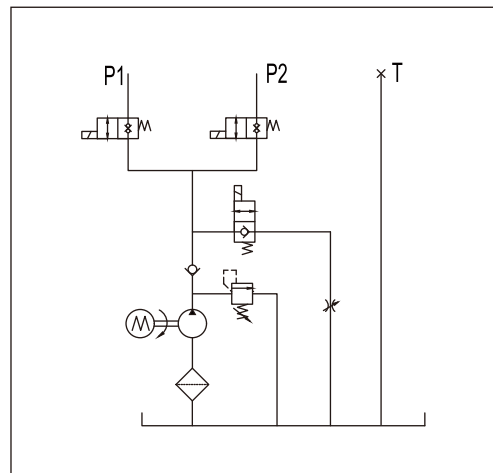
### LARGE SHEAR LIFTING POWER UNIT

此液压动力单元专为大剪举升机设计，由高压齿轮泵、交流电机、中心阀块、插装阀、油箱集成为一体。采用零泄露双向止回电磁阀实现两条油路的完全隔离，使得两条油路间的动作互不干扰。电压220-380V可选，有铁制和塑料油箱可供选择。

This hydraulic power unit is specially designed for the large shear lift. It is integrated by high-pressure gear pump, AC motor, central valve block, cartridge valve and oil tank. The zero leakage two-way check solenoid valve is used to realize the complete isolation of the two oil circuits, so that the actions between the two oil circuits do not interfere with each other. The voltage is 220-380v, and there are iron and plastic oil tanks to choose from.



#### 原理图/SCHEMATIC DIAGRAM



Y7

#### 注意事项/SPECIAL NOTES

- 此动力单元为S3工作制，不可连续运转，10秒开，90秒停。
- 安装前必须保证油缸、油管、接头等液压元件无杂质黏附。
- 液压油粘度应为15-68ST，夏季推荐46号抗磨液压油，冬季推荐32号低温液压油。
- 首次启动运行系统后，应立即检查油箱中的油量是否充足，一般为油箱2/3部位。
- 系统使用第一个100小时后，应更换液压油，以后每3000小时更换一次液压油。

- The power unit is S3 working system and can not operate continuously. It starts in 10 seconds and stops in 90 seconds.
- Before installation, ensure that hydraulic components such as oil cylinder, oil pipe and joint are free of impurities.
- The viscosity of hydraulic oil shall be 15-68st. No. 46 anti-wear hydraulic oil is recommended in summer and No. 32 low temperature hydraulic oil is recommended in winter.
- After starting the operating system for the first time, check whether the oil in the oil tank is sufficient, generally 2 / 3 of the oil tank.
- After the system is used for the first 100 hours, the hydraulic oil shall be replaced, and then the hydraulic oil shall be replaced every 3000 hours.

#### 产品配置/SPECIFICATIONS

型号 Model	电压 Volt	功率 Power	转速 Speed	油泵排量 Displacemet	工作压力 Pressure	油箱 Tank	电磁阀电压 Solenoid Vavle Volt
PNC-2.2/S-A220-2P-1/2.1-25-15/L-Y7	220VAC	2.2KW	2800RPM	2.1CC/REV	25MPA	15L	24VDC
PNC-2.2-A380-4P-1/4.2-25-15/L-Y7	380VAC		1400RPM	4.2CC/REV			220VAC

说明：如需不同流量得泵、压力、电机功率等系统参数，请联系我司业务员。

Note: if you need system parameters such as pump, pressure and motor power with different flow, please contact our salesman.

## 伸缩皮带机动力单元

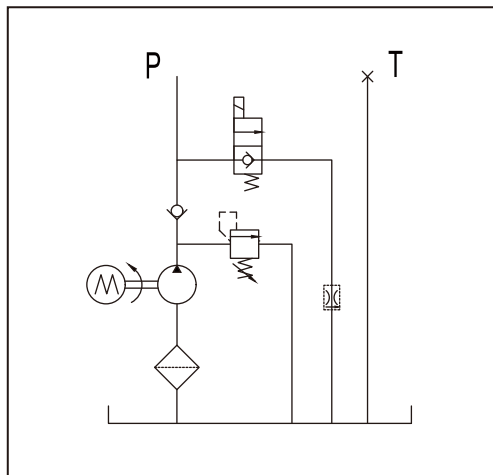
## TELESCOPIC BELT POWER UNIT

此液压动力单元专为伸缩皮带机设计，由高压齿轮泵、交流电机、中心阀块、插装阀、油箱集成为一体。启动电机，实现设备上升，下降打开电磁阀依靠自重下降，内置压力补偿阀，可实现空载与负载匀速下降。有1.5-4KW可选电机，电压220-380V可选，有铁制和塑料油箱可供选择。

This hydraulic power unit is specially designed for the telescopic belt conveyor and is integrated by high-pressure gear pump, AC motor, central valve block, cartridge valve and oil tank. Start the motor to realize the rise and fall of the equipment. Open the solenoid valve to fall by self weight. The built-in pressure compensation valve can realize the uniform drop of no-load and load. There are 1.5-4kw optional motors, 220-380v optional voltages, and iron and plastic oil tanks to choose from.



## 原理图/SCHEMATIC DIAGRAM



Y2

## 注意事项/SPECIAL NOTES

- 此动力单元为S3工作制，不可连续运转，10秒开，90秒停。
- 安装前必须保证油缸、油管、接头等液压元件无杂质黏附。
- 液压油粘度应为15-68ST，夏季推荐46号抗磨液压油，冬季推荐32号低温液压油。
- 首次启动运行系统后，应立即检查油箱中的油量是否充足，一般为油箱2/3部位。
- 系统使用第一个100小时后，应更换液压油，以后每3000小时更换一次液压油。

- The power unit is S3 working system and can not operate continuously. It starts in 10 seconds and stops in 90 seconds.
- Before installation, ensure that hydraulic components such as oil cylinder, oil pipe and joint are free of impurities.
- The viscosity of hydraulic oil shall be 15-68st. No. 46 anti-wear hydraulic oil is recommended in summer and No. 32 low temperature hydraulic oil is recommended in winter.
- After starting the operating system for the first time, check whether the oil in the oil tank is sufficient, generally 2 / 3 of the oil tank.
- After the system is used for the first 100 hours, the hydraulic oil shall be replaced, and then the hydraulic oil shall be replaced every 3000 hours.

## 产品配置/SPECIFICATIONS

型号 Model	电压 Volt	功率 Power	转速 Speed	油泵排量 Displacemet	工作压力 Pressure	油箱 Tank	电磁阀电压 Solenoid Vavle Volt
PNC-1.5-A380-4P-1/3.2-20-6/L-Y2	380VAC	1.5KW	1400RPM	3.2CC/REV	20MPA	6L	24VDC
PNC-2.2-A380-4P-1/2.7-20-8/L-Y2		2.2KW		4.2CC/REV		8L	220VAC

说明：如需不同流量得泵、压力、电机功率等系统参数，请联系我司业务员。

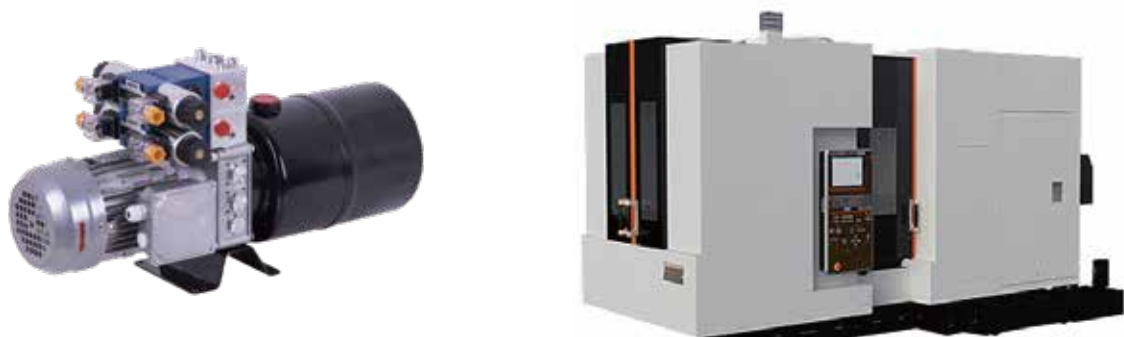
Note: if you need system parameters such as pump, pressure and motor power with different flow, please contact our salesman.

## 机床液压夹紧动力单元

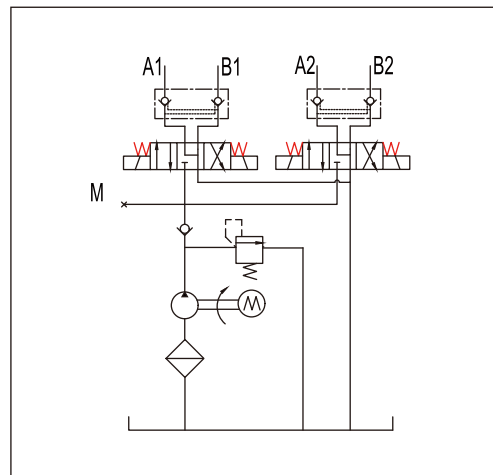
## HYDRAULIC CLAMPING POWER UNIT OF MACHINE TOOL

此液压动力单元专为机床夹紧缸设计，由高压齿轮泵、交流电机、中心阀块、插装阀、油箱集成为一体。采用液压锁保压系统，可选配蓄能器，压力开关等相结合的自动补压装置，由于体积小，电机间歇启动，更加节能。有0.75-1.5KW可选电机，电压220-380V可选，有铁制和塑料油箱可供选择。

This hydraulic power unit is specially designed for the clamping cylinder of machine tool. It is integrated by high-pressure gear pump, AC motor, central valve block, cartridge valve and oil tank. The hydraulic lock and pressure maintaining system is adopted, and the automatic pressure supplement device combined with accumulator and pressure switch can be selected. Due to its small volume, the motor starts intermittently, which is more energy-saving. There are 0.75-1.5kw optional motors, 220-380v optional voltages, and iron and plastic oil tanks to choose from.



## 原理图/SCHEMATIC DIAGRAM



Y19

## 注意事项/SPECIAL NOTES

- 此动力单元为S3工作制，不可连续运转，10秒开，90秒停。
- 安装前必须保证油缸、油管、接头等液压元件无杂质黏附。
- 液压油粘度应为15-68ST，夏季推荐46号抗磨液压油，冬季推荐32号低温液压油。
- 首次启动运行系统后，应立即检查油箱中的油量是否充足，一般为油箱2/3部位。
- 系统使用第一个100小时后，应更换液压油，以后每3000小时更换一次液压油。

- The power unit is S3 working system and can not operate continuously. It starts in 10 seconds and stops in 90 seconds.
- Before installation, ensure that hydraulic components such as oil cylinder, oil pipe and joint are free of impurities.
- The viscosity of hydraulic oil shall be 15-68st. No. 46 anti-wear hydraulic oil is recommended in summer and No. 32 low temperature hydraulic oil is recommended in winter.
- After starting the operating system for the first time, check whether the oil in the oil tank is sufficient, generally 2 / 3 of the oil tank.
- After the system is used for the first 100 hours, the hydraulic oil shall be replaced, and then the hydraulic oil shall be replaced every 3000 hours.

## 产品配置/SPECIFICATIONS

型号 Model	电压 Volt	功率 Power	转速 Speed	油泵排量 Displacemet	工作压力 Pressure	油箱 Tank	电磁阀电压 Solenoid Vavle Volt
PNC-0.75-A380-4P-1/3.2-7-6/W-Y19	380VAC	0.75KW	1400RPM	3.2CC/REV	7MPA	6L	24VDC
PNC-1.5-A380-4P-1/5.8-7-6/W-Y19		1.5KW		5.8CC/REV			220VAC

说明：如需不同流量得泵、压力、电机功率等系统参数，请联系我司业务员。

Note: if you need system parameters such as pump, pressure and motor power with different flow, please contact our salesman.



## 机床打刀缸液压动力单元

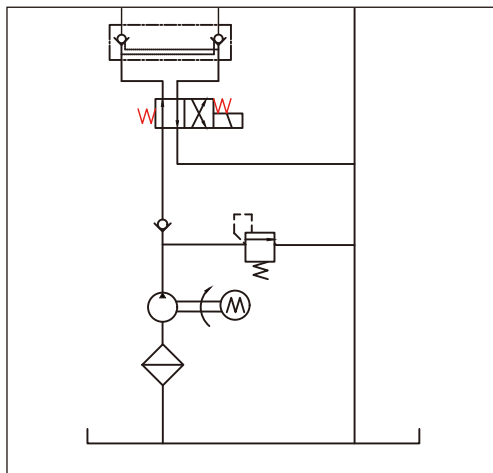
## MACHINE TOOL CUTTING CYLINDER HYDRAULIC POWER UNIT

此液压动力单元专为机床打刀缸设计，由高压齿轮泵、交流电机、中心阀块、插装阀、油箱集成为一体。采用液压锁保压系统，可选配蓄能器，压力开关等相结合的自动补压装置，由于体积小，电机间歇启动，更加节能。有0.37-2.2KW可选电机，电压220-380V可选，有铁制和塑料油箱可供选择。

This hydraulic power unit is designed specifically for machine tool cutting cylinders, consisting of a high-pressure gear pump, AC motor, central valve block, plug-in valve, and oil tank integrated into one unit. Adopting a hydraulic lock pressure holding system, an automatic pressure compensation device combining accumulator, pressure switch, etc. can be optionally equipped. Due to its small size, the motor starts intermittently, making it more energy-efficient. There are 0.75-2.2KW optional motors with a voltage of 220-380V, and iron and plastic fuel tanks to choose from.



## 原理图/SCHEMATIC DIAGRAM



Y18

## 注意事项/SPECIAL NOTES

- 此动力单元为S3工作制，不可连续运转，10秒开，90秒停。
- 安装前必须保证油缸、油管、接头等液压元件无杂质黏附。
- 液压油粘度应为15-68ST，夏季推荐46号抗磨液液压油，冬季推荐32号低温液液压油。
- 首次启动运行系统后，应立即检查油箱中的油量是否充足，一般为油箱2/3部位。
- 系统使用第一个100小时后，应更换液液压油，以后每3000小时更换一次液液压油。

- The power unit is S3 working system and can not operate continuously. It starts in 10 seconds and stops in 90 seconds.
- Before installation, ensure that hydraulic components such as oil cylinder, oil pipe and joint are free of impurities.
- The viscosity of hydraulic oil shall be 15-68st. No. 46 anti-wear hydraulic oil is recommended in summer and No. 32 low temperature hydraulic oil is recommended in winter.
- After starting the operating system for the first time, check whether the oil in the oil tank is sufficient, generally 2 / 3 of the oil tank.
- After the system is used for the first 100 hours, the hydraulic oil shall be replaced, and then the hydraulic oil shall be replaced every 3000 hours.

## 产品配置/SPECIFICATIONS

型号 Model	电压 Volt	功率 Power	转速 Speed	油泵排量 Displacemet	工作压力 Pressure	油箱 Tank	电磁阀电压 Solenoid Vavle Volt
PNC-0.37-A380-4P-1/2.1-10-6/L-Y18	380V AC	0.37KW	1400RPM	2.1CC/REV	10MPA	6L	24V
PNC-2.2-A380-4P-1/4.8-10-15/L-Y18	380V AC	2.2KW	1400RPM	4.8CC/REV		15L	

说明：如需不同流量得泵、压力、电机功率等系统参数，请联系我司业务员。

Note: if you need system parameters such as pump, pressure and motor power with different flow, please contact our salesman.

## 热熔对接焊机动力单元

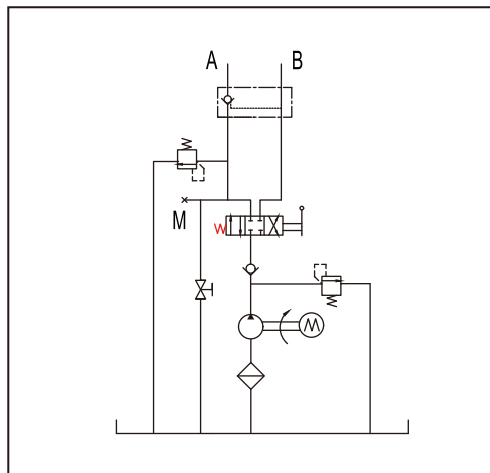
## WELDING MACHINE POWER UNIT

此液压动力单元专为热熔对接焊机设计，由高压齿轮泵、交流电机、中心阀块、插装阀、油箱集成为一体。采用插装式液压锁加蓄能器相结合的自动保压装置，保压效果好。由于体积小，电机间歇启动，更加节能。有0.75-3KW可选电机，电压220-380V可选，有铁制和塑料油箱可供选择。

This hydraulic power unit is specially designed for hot-melt butt welding machine and is integrated by high-pressure gear pump, AC motor, central valve block, cartridge valve and oil tank. The automatic pressure maintaining device combined with plug-in hydraulic lock and accumulator has good pressure maintaining effect. Due to its small size, the motor starts intermittently, which is more energy-saving. There are 0.75-3kw optional motors, 220-380v optional voltages, and iron and plastic oil tanks to choose from.



## 原理图/SCHEMATIC DIAGRAM



Y20

## 注意事项/SPECIAL NOTES

- 此动力单元为S3工作制，不可连续运转，10秒开，90秒停。
- 安装前必须保证油缸、油管、接头等液压元件无杂质黏附。
- 液压油粘度应为15-68ST，夏季推荐46号抗磨液液压油，冬季推荐32号低温液液压油。
- 首次启动运行系统后，应立即检查油箱中的油量是否充足，一般为油箱2/3部位。
- 系统使用第一个100小时后，应更换液液压油，以后每3000小时更换一次液液压油。

- The power unit is S3 working system and can not operate continuously. It starts in 10 seconds and stops in 90 seconds.
- Before installation, ensure that hydraulic components such as oil cylinder, oil pipe and joint are free of impurities.
- The viscosity of hydraulic oil shall be 15-68st. No. 46 anti-wear hydraulic oil is recommended in summer and No. 32 low temperature hydraulic oil is recommended in winter.
- After starting the operating system for the first time, check whether the oil in the oil tank is sufficient, generally 2 / 3 of the oil tank.
- After the system is used for the first 100 hours, the hydraulic oil shall be replaced, and then the hydraulic oil shall be replaced every 3000 hours.

## 产品配置/SPECIFICATIONS

型号 Model	电压 Volt	功率 Power	转速 Speed	油泵排量 Displacemet	工作压力 Pressure	油箱 Tank	电磁阀电压 Solenoid Vavle Volt
PNC-0.75/S-A220-4P-1/1.6-10-3/W-Y20	220VAC	0.75KW	1400RPM	1.6CC/REV	10MPA	3L	24VDC
PNC-1.5-A380-4P-1/4.8-10-5/W-Y20	380VAC	1.5KW		4.8CC/REV		5L	220VAC
PNC-2.2-A380-4P-1/5.8-10-5/W-Y20		2.2KW	2600RPM	5.8CC/REV			

说明：如需不同流量得泵、压力、电机功率等系统参数，请联系我司业务员。

Note: if you need system parameters such as pump, pressure and motor power with different flow, please contact our salesman.

## 管材切割机动力单元

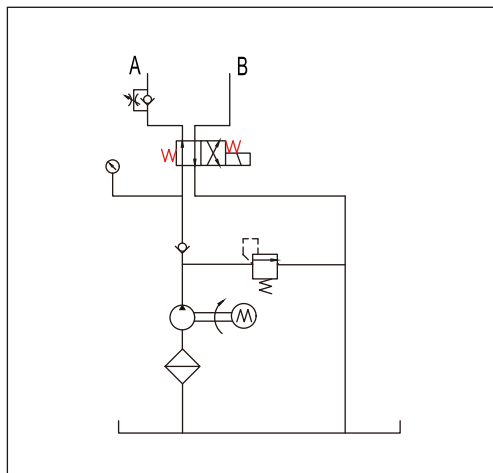
## PIPE CUTTING POWER UNIT

此液压动力单元专为管材切割机的旋转进刀设计，由高压齿轮泵、交流电机、中心阀块、插装阀、油箱集成为一体。采用意大利进口的节流阀，可实现在高温热压油的情况下慢速稳定进刀，快速退刀，由于在使用过程中需要360°旋转，因此设计了加厚法兰油箱。电机0.55KW，电压220-380V可选。

This hydraulic power unit is specially designed for the rotary feed of pipe cutting machine. It is integrated by high-pressure gear pump, AC motor, central valve block, cartridge valve and oil tank. The throttle valve imported from Italy can realize slow and stable feed and rapid withdrawal of the tool under the condition of high-temperature hot pressing oil. Because it needs 360 ° rotation in the process of use, a thickened flange oil tank is designed. Motor 0.55kw, voltage 220-380v optional.



## 原理图/SCHEMATIC DIAGRAM



Y21

## 注意事项/SPECIAL NOTES

- 此动力单元为S3工作制，不可连续运转，10秒开，90秒停。
- 安装前必须保证油缸、油管、接头等液压元件无杂质黏附。
- 液压油粘度应为15-68ST，夏季推荐46号抗磨液压油，冬季推荐32号低温液压油。
- 首次启动运行系统后，应立即检查油箱中的油量是否充足，一般为油箱2/3部位。
- 系统使用第一个100小时后，应更换液压油，以后每3000小时更换一次液压油。

- The power unit is S3 working system and can not operate continuously. It starts in 10 seconds and stops in 90 seconds.
- Before installation, ensure that hydraulic components such as oil cylinder, oil pipe and joint are free of impurities.
- The viscosity of hydraulic oil shall be 15-68st. No. 46 anti-wear hydraulic oil is recommended in summer and No. 32 low temperature hydraulic oil is recommended in winter.
- After starting the operating system for the first time, check whether the oil in the oil tank is sufficient, generally 2 / 3 of the oil tank.
- After the system is used for the first 100 hours, the hydraulic oil shall be replaced, and then the hydraulic oil shall be replaced every 3000 hours.

## 产品配置/SPECIFICATIONS

型号 Model	电压 Volt	功率 Power	转速 Speed	油泵排量 Displacemet	工作压力 Pressure	油箱 Tank	电磁阀电压 Solenoid Vavle Volt
PNC-0.55-A380-4P-1/3.2-4-5/L-Y21	380VAC	0.55KW	1400RPM	3.2CC/REV	4MPA	5L	24VDC/220VAC

说明：如需不同流量得泵、压力、电机功率等系统参数，请联系我司业务员。

Note: if you need system parameters such as pump, pressure and motor power with different flow, please contact our salesman.

## 拦蓄冲洗门动力单元

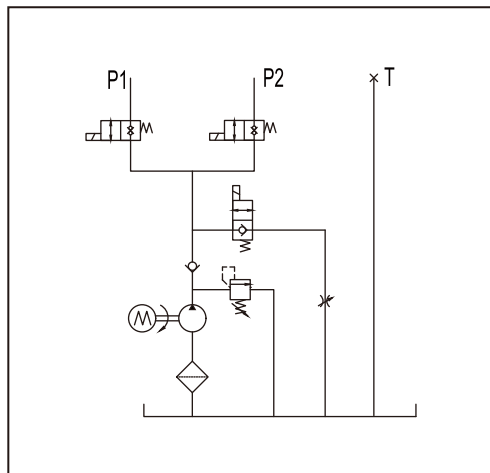
## POWER UNIT OF STORAGE FLUSHING DOOR

此液压动力单元专为拦蓄冲洗门设计，由高压齿轮泵、交流电机、中心阀块、插装阀、油箱集成为一体。采用模块化的设计，可叠加2-10路意大利进口双止回电磁阀，零泄露，保压好，可实现多个冲洗门的单独控制。选用0.55-1.1KW电机，可选铁制和塑料油箱。

This hydraulic power unit is specially designed for the storage flushing door and is integrated by high-pressure gear pump, AC motor, central valve block, cartridge valve and oil tank. The modular design is adopted, and 2-10 channels of Italian imported double check solenoid valves can be superimposed, with zero leakage and good pressure holding, which can realize the independent control of multiple flushing doors. Select 0.55-1.1kw motor and iron and plastic oil tank.



## 原理图/SCHEMATIC DIAGRAM



Y7

## 注意事项/SPECIAL NOTES

- 此动力单元为S3工作制，不可连续运转，10秒开，90秒停。
- 安装前必须保证油缸、油管、接头等液压元件无杂质黏附。
- 液压油粘度应为15-68ST，夏季推荐46号抗磨液压油，冬季推荐32号低温液压油。
- 首次启动运行系统后，应立即检查油箱中的油量是否充足，一般为油箱2/3部位。
- 系统使用第一个100小时后，应更换液压油，以后每3000小时更换一次液压油。

- The power unit is S3 working system and can not operate continuously. It starts in 10 seconds and stops in 90 seconds.
- Before installation, ensure that hydraulic components such as oil cylinder, oil pipe and joint are free of impurities.
- The viscosity of hydraulic oil shall be 15-68st. No. 46 anti-wear hydraulic oil is recommended in summer and No. 32 low temperature hydraulic oil is recommended in winter.
- After starting the operating system for the first time, check whether the oil in the oil tank is sufficient, generally 2 / 3 of the oil tank.
- After the system is used for the first 100 hours, the hydraulic oil shall be replaced, and then the hydraulic oil shall be replaced every 3000 hours.

## 产品配置/SPECIFICATIONS

型号 Model	电压 Volt	功率 Power	转速 Speed	油泵排量 Displacemet	工作压力 Pressure	油箱 Tank	电磁阀电压 Solenoid Vavle Volt
PNC-0.55-A380-4P-1/1.2-4-5/L-Y7	380VAC	0.55KW	1400RPM	1.2CC/REV	10MPA	5L	24VDC
PNC-1.1-A380-4P-1/6.8-10-5/L-Y7		1.1KW		6.8CC/REV			220VAC

说明：如需不同流量得泵、压力、电机功率等系统参数，请联系我司业务员。

Note: if you need system parameters such as pump, pressure and motor power with different flow, please contact our salesman.



## 交流双作用动力单元

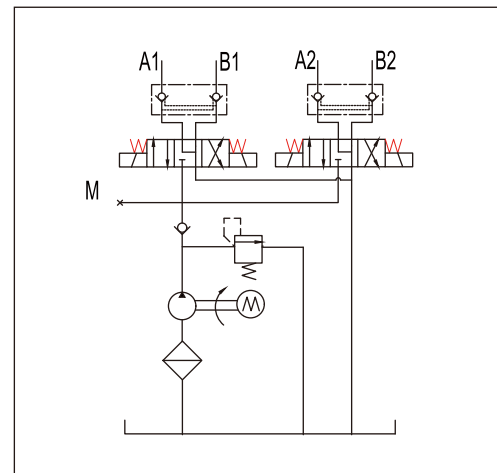
## AC DOUBLE ACTING POWER UNIT

此液压动力单元专为双作用油缸系统设计，由高压齿轮泵、交流电机、中心阀块、插装阀、油箱集成为一体。采用模块化的设计，可任意叠加双作用电磁阀，液压锁，节流阀等。选用0.55-5.5KW电机，可选铁制和塑料油箱。

This hydraulic power unit is specially designed for double acting oil cylinder system, which is integrated by high-pressure gear pump, AC motor, central valve block, cartridge valve and oil tank. Modular design is adopted, and double acting solenoid valve, hydraulic lock, throttle valve, etc. can be superimposed arbitrarily. Select 0.55-5.5kw motor and iron and plastic oil tank.



## 原理图/SCHEMATIC DIAGRAM



Y19

## 注意事项/SPECIAL NOTES

- 此动力单元为S3工作制，不可连续运转，10秒开，90秒停。
- 安装前必须保证油缸、油管、接头等液压元件无杂质黏附。
- 液压油粘度应为15-68ST，夏季推荐46号抗磨液压油，冬季推荐32号低温液压油。
- 首次启动运行系统后，应立即检查油箱中的油量是否充足，一般为油箱2/3部位。
- 系统使用第一个100小时后，应更换液压油，以后每3000小时更换一次液压油。

- The power unit is S3 working system and can not operate continuously. It starts in 10 seconds and stops in 90 seconds.
- Before installation, ensure that hydraulic components such as oil cylinder, oil pipe and joint are free of impurities.
- The viscosity of hydraulic oil shall be 15-68st. No. 46 anti-wear hydraulic oil is recommended in summer and No. 32 low temperature hydraulic oil is recommended in winter.
- After starting the operating system for the first time, check whether the oil in the oil tank is sufficient, generally 2 / 3 of the oil tank.
- After the system is used for the first 100 hours, the hydraulic oil shall be replaced, and then the hydraulic oil shall be replaced every 3000 hours.

## 产品配置/SPECIFICATIONS

型号 Model	电压 Volt	功率 Power	转速 Speed	油泵排量 Displacemet	工作压力 Pressure	油箱 Tank	电磁阀电压 Solenoid Vavle Volt
PNC-0.55-A380-4P-1/1.2-16-15/L-Y19	380VAC	0.55KW	1400RPM	1.2CC/REV	16MPA	15L	24VDC
PNC-1.5-A380-4P-1/4.8-16-22/L-Y19		1.5KW		4.8CC/REV		22L	220VAC
PNC-3-A380-4P-1/6.8-16-40/L-Y19		3KW		6.8CC/REV		40L	

说明：如需不同流量得泵、压力、电机功率等系统参数，请联系我司业务员。

Note: if you need system parameters such as pump, pressure and motor power with different flow, please contact our salesman.

## 一体升降柱动力单元

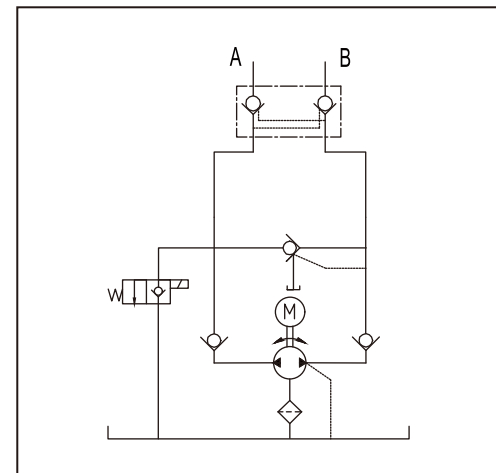
## INTEGRATED LIFTING COLUMN POWER UNIT

此液压动力单元专为一体式液压升降柱所设计，由双向齿轮泵、交流浸油电机、阀块、插装阀、油箱集成为一体。采用双向泵的设计结构，上升和下降依靠电机正反转实现，避免了使用电磁阀换向，结构紧凑。防水等级IP68，可以泡水使用。电机0.35KW，电压220-380V可选。

The hydraulic power unit is specially designed for the integrated hydraulic lifting column, which is integrated by two-way gear pump, AC oil immersion motor, valve block, cartridge valve and oil tank. The design structure of the two-way pump is adopted, and the rise and fall are realized by the forward and reverse rotation of the motor, which avoids the commutation of the solenoid valve, and the structure is compact. The waterproof grade is IP68 and can be used in water. Motor 0.35kw, voltage 220-380v optional.



## 原理图/SCHEMATIC DIAGRAM



Y23

## 注意事项/SPECIAL NOTES

- 此动力单元为S3工作制，不可连续运转，10秒开，90秒停。
- 安装前必须保证油缸、油管、接头等液压元件无杂质黏附。
- 液压油粘度应为15-68ST，夏季推荐46号抗磨液压油，冬季推荐32号低温液压油。
- 首次启动运行系统后，应立即检查油箱中的油量是否充足，一般为油箱2/3部位。
- 系统使用第一个100小时后，应更换液压油，以后每3000小时更换一次液压油。

- The power unit is S3 working system and can not operate continuously. It starts in 10 seconds and stops in 90 seconds.
- Before installation, ensure that hydraulic components such as oil cylinder, oil pipe and joint are free of impurities.
- The viscosity of hydraulic oil shall be 15-68st. No. 46 anti-wear hydraulic oil is recommended in summer and No. 32 low temperature hydraulic oil is recommended in winter.
- After starting the operating system for the first time, check whether the oil in the oil tank is sufficient, generally 2 / 3 of the oil tank.
- After the system is used for the first 100 hours, the hydraulic oil shall be replaced, and then the hydraulic oil shall be replaced every 3000 hours.

## 产品配置/SPECIFICATIONS

型号 Model	电压 Volt	功率 Power	转速 Speed	油泵排量 Displacemet	工作压力 Pressure	油箱 Tank	电磁阀电压 Solenoid Vavle Volt
PNC-0.35KW-A220-3S-JY-YT	220VAC	0.35KW	2800RPM	1.5CC/REV	6MPA	2L	12VDC
PNC-0.35KW-A220-4S-JY-YT				1.75CC/REV			
PNC-0.35KW-A380-4S-JY-YT	380VAC						

说明：如需不同流量得泵、压力、电机功率等系统参数，请联系我司业务员。

Note: if you need system parameters such as pump, pressure and motor power with different flow, please contact our salesman.

## 一体多级缸升降柱动力单元

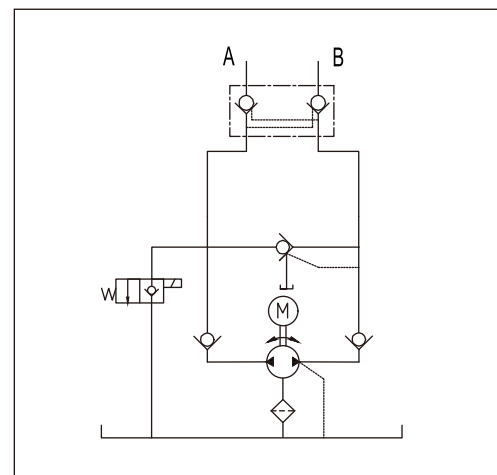
## INTEGRATED MULTISTAGE CYLINDER LIFTING COLUMN POWER UNIT

此液压动力单元专为一体浅埋式液压升降柱所设计，由双向齿轮泵、交流浸油电机、阀块、插装阀、油箱集成为一体。采用双向泵的设计结构，上升和下降依靠电机正反转实现，避免了使用电磁阀换向，结构紧凑。防水等级IP68，可以泡水使用。采用多级缸的设计，可以让安装高度更矮，适应于无法深挖施工的场所。电机0.35KW，电压220-380V可选。

The hydraulic power unit is specially designed for the integrated shallow buried hydraulic lifting column, which is integrated by two-way gear pump, AC oil immersion motor, valve block, cartridge valve and oil tank. The design structure of the two-way pump is adopted, and the rise and fall are realized by the forward and reverse rotation of the motor, which avoids the commutation of the solenoid valve, and the structure is compact. The waterproof grade is IP68 and can be used in water. The design of multi-stage cylinder can make the installation height shorter, which is suitable for occasions where deep excavation construction is impossible. Motor 0.35kw, voltage 220-380v optional.



## 原理图/SCHEMATIC DIAGRAM



Y23

## 注意事项/SPECIAL NOTES

- 此动力单元为S3工作制，不可连续运转，10秒开，90秒停。
- 安装前必须保证油缸、油管、接头等液压元件无杂质黏附。
- 液压油粘度应为15-68ST，夏季推荐46号抗磨液压油，冬季推荐32号低温液压油。
- 首次启动运行系统后，应立即检查油箱中的油量是否充足，一般为油箱2/3部位。
- 系统使用第一个100小时后，应更换液压油，以后每3000小时更换一次液压油。

- The power unit is S3 working system and can not operate continuously. It starts in 10 seconds and stops in 90 seconds.
- Before installation, ensure that hydraulic components such as oil cylinder, oil pipe and joint are free of impurities.
- The viscosity of hydraulic oil shall be 15-68st. No. 46 anti-wear hydraulic oil is recommended in summer and No. 32 low temperature hydraulic oil is recommended in winter.
- After starting the operating system for the first time, check whether the oil in the oil tank is sufficient, generally 2 / 3 of the oil tank.
- After the system is used for the first 100 hours, the hydraulic oil shall be replaced, and then the hydraulic oil shall be replaced every 3000 hours.

## 产品配置/SPECIFICATIONS

型号 Model	电压 Volt	功率 Power	转速 Speed	油泵排量 Displacemet	工作压力 Pressure	油箱 Tank	电磁阀电压 Solenoid Vavle Volt
PNC-0.35KW-A220-LJ-JY-YT	220VDC	0.35KW	2800RPM	1.75CC/REV	6MPA	2L	12VDC
PNC-0.35KW-A380-LJ-JY-YT	380VDC						

说明：如需不同流量得泵、压力、电机功率等系统参数，请联系我司业务员。

Note: if you need system parameters such as pump, pressure and motor power with different flow, please contact our salesman.

## 浅埋升降柱动力单元

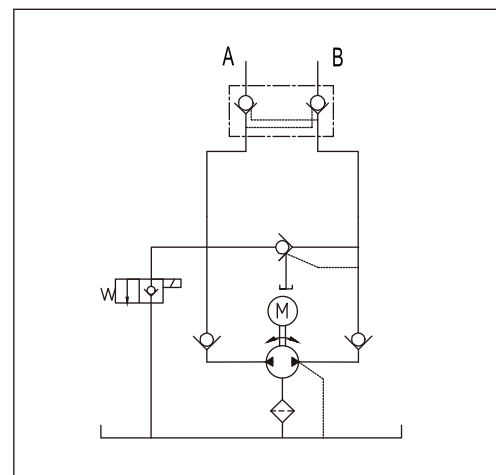
## SHALLOW BURIED LIFTING COLUMN POWER UNIT

此液压动力单元专为一体式液压升降柱所设计，由双向齿轮泵、交流浸油电机、阀块、插装阀、油箱集成为一体。采用双向泵的设计结构，上升和下降依靠电机正反转实现，避免了使用电磁阀换向，结构紧凑。防水等级IP68，可以泡水使用。采用分体设计，可以让安装高度更矮，适应于无法深挖施工的场所。电机0.35KW，电压220-380V可选。

The hydraulic power unit is specially designed for the integrated hydraulic lifting column, which is integrated by two-way gear pump, AC oil immersion motor, valve block, cartridge valve and oil tank. The design structure of the two-way pump is adopted, and the rise and fall are realized by the forward and reverse rotation of the motor, which avoids the commutation of the solenoid valve, and the structure is compact. The waterproof grade is IP68 and can be used in water. Motor 0.35kw, voltage 220-380v optional.



## 原理图/SCHEMATIC DIAGRAM



Y23

## 注意事项/SPECIAL NOTES

- 此动力单元为S3工作制，不可连续运转，10秒开，90秒停。
- 安装前必须保证油缸、油管、接头等液压元件无杂质黏附。
- 液压油粘度应为15-68ST，夏季推荐46号抗磨液压油，冬季推荐32号低温液压油。
- 首次启动运行系统后，应立即检查油箱中的油量是否充足，一般为油箱2/3部位。
- 系统使用第一个100小时后，应更换液压油，以后每3000小时更换一次液压油。

- The power unit is S3 working system and can not operate continuously. It starts in 10 seconds and stops in 90 seconds.
- Before installation, ensure that hydraulic components such as oil cylinder, oil pipe and joint are free of impurities.
- The viscosity of hydraulic oil shall be 15-68st. No. 46 anti-wear hydraulic oil is recommended in summer and No. 32 low temperature hydraulic oil is recommended in winter.
- After starting the operating system for the first time, check whether the oil in the oil tank is sufficient, generally 2 / 3 of the oil tank.
- After the system is used for the first 100 hours, the hydraulic oil shall be replaced, and then the hydraulic oil shall be replaced every 3000 hours.

## 产品配置/SPECIFICATIONS

型号 Model	电压 Volt	功率 Power	转速 Speed	油泵排量 Displacemet	工作压力 Pressure	油箱 Tank	电磁阀电压 Solenoid Vavle Volt
PNC-0.35KW-A220-QM-JY-YT	220V AC	0.25KW	2800RPM	1.25CC/REV	6MPA	1L	12VDC
PNC-0.35KW-A380-QM-JY-YT	380V AC						

说明：如需不同流量得泵、压力、电机功率等系统参数，请联系我司业务员。

Note: if you need system parameters such as pump, pressure and motor power with different flow, please contact our salesman.



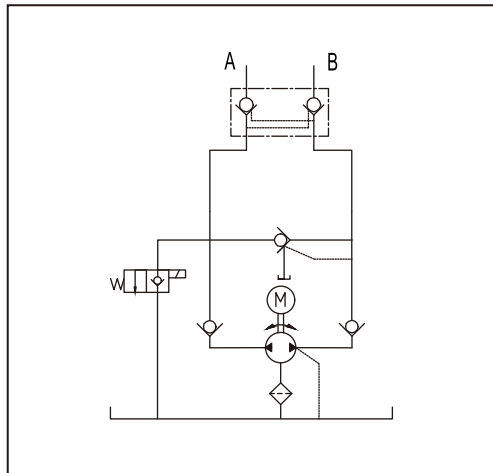
分体升降柱动力单元  
SPLIT LIFTING COLUMN POWER UNIT

此液压动力单元专为分体式液压升降柱所设计，由双向齿轮泵、交流浸油电机、阀块、插装阀、油箱集成为一体。采用双向泵的设计结构，上升和下降依靠电机正反转实现，避免了使用电磁阀换向，结构紧凑。防水等级IP68，可以泡水使用。采用分体设计，可以让安装高度更矮，适应于无法深挖施工的场所。电机0.35KW，电压220-380V可选。

This hydraulic power unit is specially designed for split hydraulic lifting column, which is integrated by two-way gear pump, AC oil immersion motor, valve block, cartridge valve and oil tank. The design structure of the two-way pump is adopted, and the rise and fall are realized by the forward and reverse rotation of the motor, which avoids the commutation of the solenoid valve, and the structure is compact. The waterproof grade is IP68 and can be used in water. The split design can make the installation height shorter, which is suitable for occasions where deep excavation construction is impossible. Motor 0.35kw, voltage 220-380v optional.



原理图/SCHEMATIC DIAGRAM



Y23

注意事项/SPECIAL NOTES

- 此动力单元为S3工作制，不可连续运转，10秒开，90秒停。
- 安装前必须保证油缸、油管、接头等液压元件无杂质黏附。
- 液压油粘度应为15-68ST，夏季推荐46号抗磨液压油，冬季推荐32号低温液压油。
- 首次启动运行系统后，应立即检查油箱中的油量是否充足，一般为油箱2/3部位。
- 系统使用第一个100小时后，应更换液压油，以后每3000小时更换一次液压油。
- The power unit is S3 working system and can not operate continuously. It starts in 10 seconds and stops in 90 seconds.
- Before installation, ensure that hydraulic components such as oil cylinder, oil pipe and joint are free of impurities.
- The viscosity of hydraulic oil shall be 15-68st. No. 46 anti-wear hydraulic oil is recommended in summer and No. 32 low temperature hydraulic oil is recommended in winter.
- After starting the operating system for the first time, check whether the oil in the oil tank is sufficient, generally 2 / 3 of the oil tank.
- After the system is used for the first 100 hours, the hydraulic oil shall be replaced, and then the hydraulic oil shall be replaced every 3000 hours.

产品配置/SPECIFICATIONS

型号 Model	电压 Volt	功率 Power	转速 Speed	油泵排量 Displacemet	工作压力 Pressure	油箱 Tank	电磁阀电压 Solenoid Vavle Volt
PNC-0.35KW-A220-3S-JY-FT	220VAC	0.35KW	2800RPM	1.5CC/REV	6MPA	2L	12VDC
PNC-0.35KW-A220-4S-JY-FT				1.75CC/REV			
PNC-0.35KW-A380-4S-JY-FT	380VAC						

说明：如需不同流量得泵、压力、电机功率等系统参数，请联系我司业务员。

Note: if you need system parameters such as pump, pressure and motor power with different flow, please contact our salesman.

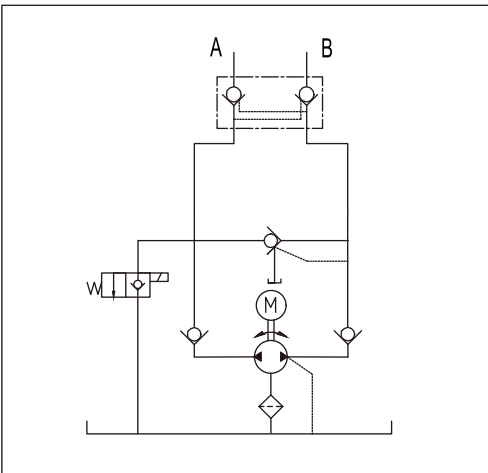
分体多级缸升降柱动力单元  
SPLIT MULTISTAGE CYLINDER LIFTING COLUMN POWER UNIT

此液压动力单元专为分体浅埋式液压升降柱所设计，由双向齿轮泵、交流浸油电机、阀块、插装阀、油箱集成为一体。采用双向泵的设计结构，上升和下降依靠电机正反转实现，避免了使用电磁阀换向，结构紧凑。防水等级IP68，可以泡水使用。采用分体多级缸的设计，使得升降柱总高度在500mm以内，适应于无法深挖施工的场所。电机0.35KW，电压220-380V可选。

This hydraulic power unit is specially designed for split shallow buried hydraulic lifting column, which is integrated by two-way gear pump, AC oil immersion motor, valve block, cartridge valve and oil tank. The design structure of the two-way pump is adopted, and the rise and fall are realized by the forward and reverse rotation of the motor, which avoids the commutation of the solenoid valve, and the structure is compact. The waterproof grade is IP68 and can be used in water. The design of split multi-stage cylinder is adopted, so that the total height of the lifting column is less than 500mm, which is suitable for occasions where deep excavation construction is impossible. Motor 0.35kw, voltage 220-380v optional.



原理图/SCHEMATIC DIAGRAM



Y23

注意事项/SPECIAL NOTES

- 此动力单元为S3工作制，不可连续运转，10秒开，90秒停。
- 安装前必须保证油缸、油管、接头等液压元件无杂质黏附。
- 液压油粘度应为15-68ST，夏季推荐46号抗磨液压油，冬季推荐32号低温液压油。
- 首次启动运行系统后，应立即检查油箱中的油量是否充足，一般为油箱2/3部位。
- 系统使用第一个100小时后，应更换液压油，以后每3000小时更换一次液压油。
- The power unit is S3 working system and can not operate continuously. It starts in 10 seconds and stops in 90 seconds.
- Before installation, ensure that hydraulic components such as oil cylinder, oil pipe and joint are free of impurities.
- The viscosity of hydraulic oil shall be 15-68st. No. 46 anti-wear hydraulic oil is recommended in summer and No. 32 low temperature hydraulic oil is recommended in winter.
- After starting the operating system for the first time, check whether the oil in the oil tank is sufficient, generally 2 / 3 of the oil tank.
- After the system is used for the first 100 hours, the hydraulic oil shall be replaced, and then the hydraulic oil shall be replaced every 3000 hours.

产品配置/SPECIFICATIONS

型号 Model	电压 Volt	功率 Power	转速 Speed	油泵排量 Displacemet	工作压力 Pressure	油箱 Tank	电磁阀电压 Solenoid Vavle Volt
PNC-0.35KW-A220-LJ-JY-FT	220VDC	0.35KW	2800RPM	1.75CC/REV	6MPA	2L	12VDC
PNC-0.35KW-A380-LJ-JY-FT	380VDC						

说明：如需不同流量得泵、压力、电机功率等系统参数，请联系我司业务员。

Note: if you need system parameters such as pump, pressure and motor power with different flow, please contact our salesman.

反恐路障机动力单元

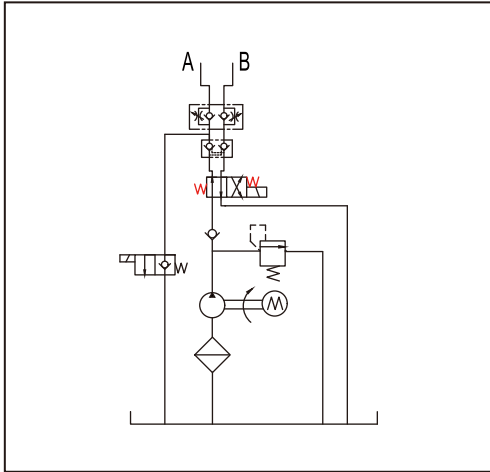
ANTI TERRORISM ROADBLOCK POWER UNIT

此液压动力单元专为反恐液压路障机所设计，由高压齿轮泵、交流浸油电机、阀块、插装阀、油箱集成为一体。采用油浸式电机的设计结构，防水IP68等级。上升和下降依靠电机和电磁阀的工作实现。有停电应急泄压功能，组合蓄能器使用可做到一秒级快速上升。电机1.5-3KW，电压220-380V可选。

This hydraulic power unit is specially designed for anti-terrorism hydraulic roadblock machine. It is integrated by high-pressure gear pump, AC oil immersion motor, valve block, cartridge valve and oil tank. The design structure of oil immersed motor is adopted, and the waterproof grade is IP68. The rising and falling are realized by the operation of motor and solenoid valve. It has power failure emergency pressure relief function, and the use of combined accumulator can achieve rapid rise in one second. Motor 1.5-3kw, voltage 220-380v optional.



原理图/SCHEMATIC DIAGRAM



Y22

注意事项/SPECIAL NOTES

- 此动力单元为S3工作制，不可连续运转，10秒开，90秒停。
- 安装前必须保证油缸、油管、接头等液压元件无杂质黏附。
- 液压油粘度应为15-68ST，夏季推荐46号抗磨液压油，冬季推荐32号低温液压油。
- 首次启动运行系统后，应立即检查油箱中的油量是否充足，一般为油箱2/3部位。
- 系统使用第一个100小时后，应更换液压油，以后每3000小时更换一次液压油。
- The power unit is S3 working system and can not operate continuously. It starts in 10 seconds and stops in 90 seconds.
- Before installation, ensure that hydraulic components such as oil cylinder, oil pipe and joint are free of impurities.
- The viscosity of hydraulic oil shall be 15-68st. No. 46 anti-wear hydraulic oil is recommended in summer and No. 32 low temperature hydraulic oil is recommended in winter.
- After starting the operating system for the first time, check whether the oil in the oil tank is sufficient, generally 2 / 3 of the oil tank.
- After the system is used for the first 100 hours, the hydraulic oil shall be replaced, and then the hydraulic oil shall be replaced every 3000 hours.

产品配置/SPECIFICATIONS

型号 Model	电压 Volt	功率 Power	转速 Speed	油泵排量 Displacemet	工作压力 Pressure	油箱 Tank	电磁阀电压 Solenoid Vavle Volt
PNC-1.5/S-A220-4P-1/5.8-16-22/L-Y22	220VAC	1.5KW	1400RPM	5.8CC/REV	16MPA	22L	12VDC
PNC-1.5-A380-2P-1/3.2-16-10/L-Y22	380VAC		2800RPM	3.2CC/REV		10L	
PNC-3-A380-2P-1/5.8-16-22/L-Y22		3KW		5.8CC/REV		22L	

说明：如需不同流量得泵、压力、电机功率等系统参数，请联系我司业务员。

Note: if you need system parameters such as pump, pressure and motor power with different flow, please contact our salesman.

重型反恐路障机动力单元

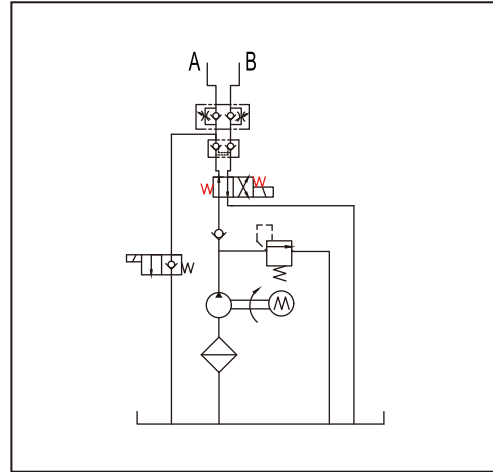
HEAVY DUTY ANTI-TERRORISM ROADBLOCK MOBILITY UNIT

此液压动力单元专为反恐液压路障机所设计，由高压齿轮泵、交流浸油电机、阀块、插装阀、油箱集成为一体。采用油浸式电机的设计结构，防水IP68等级。上升和下降依靠电机和电磁阀的工作实现。有停电应急泄压功能，组合蓄能器使用可做到一秒级快速上升。电机4-5.5KW，电压380V。

This hydraulic power unit is specially designed for anti-terrorism hydraulic roadblock machine. It is integrated by high-pressure gear pump, AC oil immersion motor, valve block, cartridge valve and oil tank. The design structure of oil immersed motor is adopted, and the waterproof grade is IP68. The rising and falling are realized by the operation of motor and solenoid valve. It has power failure emergency pressure relief function, and the use of combined accumulator can achieve rapid rise in one second. Motor 4-5.5kw, voltage380v .



原理图/SCHEMATIC DIAGRAM



Y22

注意事项/SPECIAL NOTES

- 此动力单元为S3工作制，不可连续运转，10秒开，90秒停。
- 安装前必须保证油缸、油管、接头等液压元件无杂质黏附。
- 液压油粘度应为15-68ST，夏季推荐46号抗磨液压油，冬季推荐32号低温液压油。
- 首次启动运行系统后，应立即检查油箱中的油量是否充足，一般为油箱2/3部位。
- 系统使用第一个100小时后，应更换液压油，以后每3000小时更换一次液压油。
- The power unit is S3 working system and can not operate continuously. It starts in 10 seconds and stops in 90 seconds.
- Before installation, ensure that hydraulic components such as oil cylinder, oil pipe and joint are free of impurities.
- The viscosity of hydraulic oil shall be 15-68st. No. 46 anti-wear hydraulic oil is recommended in summer and No. 32 low temperature hydraulic oil is recommended in winter.
- After starting the operating system for the first time, check whether the oil in the oil tank is sufficient, generally 2 / 3 of the oil tank.
- After the system is used for the first 100 hours, the hydraulic oil shall be replaced, and then the hydraulic oil shall be replaced every 3000 hours.

产品配置/SPECIFICATIONS

型号 Model	电压 Volt	功率 Power	转速 Speed	油泵排量 Displacemet	工作压力 Pressure	油箱 Tank	电磁阀电压 Solenoid Vavle Volt
PNC-4-A380-4P-2/16-16-40/L-Y22	380V AC	4KW	1400RPM	16CC/REV	16MPA	40L	12VDC
PNC-5.5 -A380-4P-2/20-16-40/L-Y22	380V AC	5.5KW	1400RPM	20CC/REV			

说明：如需不同流量得泵、压力、电机功率等系统参数，请联系我司业务员。

Note: if you need system parameters such as pump, pressure and motor power with different flow, please contact our salesman.



## 浸油式双向泵动力单元

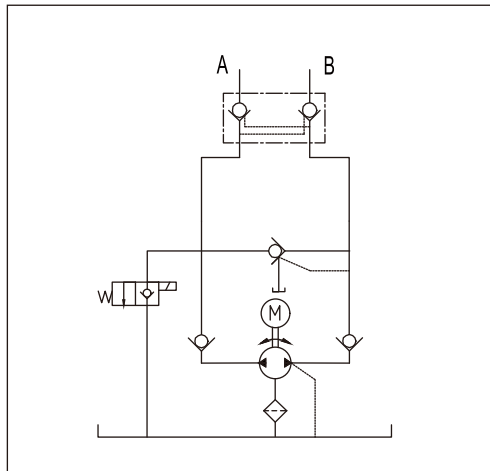
## OIL IMMERSED BIDIRECTIONAL PUMP POWER UNIT

此液压动力单元为由高压双向齿轮泵、交流浸油电机、阀块、插装阀、油箱集成为一体。采用油浸式电机的设计结构，防水IP68等级。油缸换向依靠电机正反转实现。由于噪音小，空间紧凑，被广泛应用于各类机械设备。电机0.1-0.35KW，电压220-380V可选。

The hydraulic power unit is a high-pressure bidirectional gear pump, AC oil immersion motor, valve block, cartridge valve and oil tank. The design structure of oil immersed motor is adopted, and the waterproof grade is IP68. The reversing of oil cylinder depends on the forward and reverse rotation of motor. Due to low noise and compact space, it is widely used in all kinds of mechanical equipment. Motor 0.1-0.35kw, voltage 220-380v optional.



## 原理图/SCHEMATIC DIAGRAM



Y23

## 注意事项/SPECIAL NOTES

- 此动力单元为S3工作制，不可连续运转，10秒开，90秒停。
- 安装前必须保证油缸、油管、接头等液压元件无杂质黏附。
- 液压油粘度应为15-68ST，夏季推荐46号抗磨液压油，冬季推荐32号低温液压油。
- 首次启动运行系统后，应立即检查油箱中的油量是否充足，一般为油箱2/3部位。
- 系统使用第一个100小时后，应更换液压油，以后每3000小时更换一次液压油。

- The power unit is S3 working system and can not operate continuously. It starts in 10 seconds and stops in 90 seconds.
- Before installation, ensure that hydraulic components such as oil cylinder, oil pipe and joint are free of impurities.
- The viscosity of hydraulic oil shall be 15-68st. No. 46 anti-wear hydraulic oil is recommended in summer and No. 32 low temperature hydraulic oil is recommended in winter.
- After starting the operating system for the first time, check whether the oil in the oil tank is sufficient, generally 2 / 3 of the oil tank.
- After the system is used for the first 100 hours, the hydraulic oil shall be replaced, and then the hydraulic oil shall be replaced every 3000 hours.

## 产品配置/SPECIFICATIONS

型号 Model	电压 Volt	功率 Power	转速 Speed	油泵排量 Displacemet	工作压力 Pressure	油箱 Tank	电磁阀电压 Solenoid Vavle Volt
PNC-0.2/S-A220-4P-0.5T/0.26-10-2/W-Y23	220VAC	0.2KW	1400RPM	0.26CC/REV	10MPA	2L	NULL
PNC-0.35/S-A220-2P-0.5T/0.75-12-2/W-Y23		0.35KW	2800RPM	0.75CC/REV	12MPA		
PNC-0.35-A380-2P-0.5T/1.0-14-2/W-Y23	380VAC			1.0CC/REV	14MPA		

说明：如需不同流量得泵、压力、电机功率等系统参数，请联系我司业务员。

Note: if you need system parameters such as pump, pressure and motor power with different flow, please contact our salesman.

## 浸油式双作用动力单元

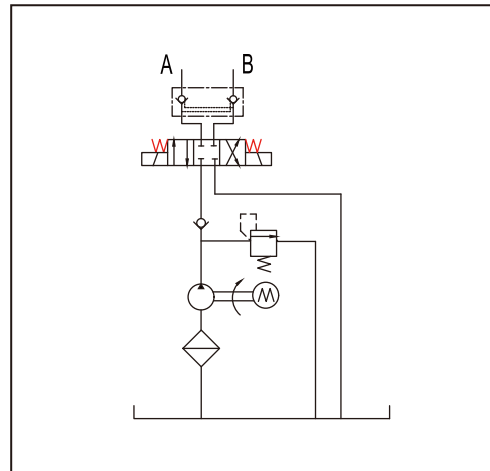
## OIL IMMERSED DOUBLE ACTING POWER UNIT

此液压动力单元为由高压齿轮泵、交流浸油电机、阀块、插装阀、油箱集成为一体。采用油浸式电机的设计结构，防水IP68等级。油缸换向依靠电磁阀换向实现，可叠加多路液压锁，调速阀组合使用。由于噪音小，空间紧凑，被广泛应用于各类机械设备。电机0.1-0.35KW，电压220-380V可选。

The hydraulic power unit is composed of high-pressure gear pump, AC oil immersion motor, valve block, cartridge valve and oil tank. The design structure of oil immersed motor is adopted, and the waterproof grade is IP68. The reversing of oil cylinder depends on the reversing of solenoid valve, which can be combined with multi-channel hydraulic lock and speed regulating valve. Due to low noise and compact space, it is widely used in all kinds of mechanical equipment. Motor 0.1-0.35kw, voltage 220-380v optional.



## 原理图/SCHEMATIC DIAGRAM



Y10

## 注意事项/SPECIAL NOTES

- 此动力单元为S3工作制，不可连续运转，10秒开，90秒停。
- 安装前必须保证油缸、油管、接头等液压元件无杂质黏附。
- 液压油粘度应为15-68ST，夏季推荐46号抗磨液压油，冬季推荐32号低温液压油。
- 首次启动运行系统后，应立即检查油箱中的油量是否充足，一般为油箱2/3部位。
- 系统使用第一个100小时后，应更换液压油，以后每3000小时更换一次液压油。

- The power unit is S3 working system and can not operate continuously. It starts in 10 seconds and stops in 90 seconds.
- Before installation, ensure that hydraulic components such as oil cylinder, oil pipe and joint are free of impurities.
- The viscosity of hydraulic oil shall be 15-68st. No. 46 anti-wear hydraulic oil is recommended in summer and No. 32 low temperature hydraulic oil is recommended in winter.
- After starting the operating system for the first time, check whether the oil in the oil tank is sufficient, generally 2 / 3 of the oil tank.
- After the system is used for the first 100 hours, the hydraulic oil shall be replaced, and then the hydraulic oil shall be replaced every 3000 hours.

## 产品配置/SPECIFICATIONS

型号 Model	电压 Volt	功率 Power	转速 Speed	油泵排量 Displacemet	工作压力 Pressure	油箱 Tank	电磁阀电压 Solenoid Vavle Volt
PNC-0.2/S-A220-4P-0.5T/0.26-10-2/W-Y10	220VAC	0.2KW	1400RPM	0.26CC/REV	10MPA	2L	12/24VDC
PNC-0.35/S-A220-2P-0.5T/0.75-12-2/W-Y10		0.35KW	2800RPM	0.75CC/REV	12MPA		
PNC-0.35-A380-2P-0.5T/1.0-14-2/W-Y10	380VAC			1.0CC/REV	14MPA		

说明：如需不同流量得泵、压力、电机功率等系统参数，请联系我司业务员。

Note: if you need system parameters such as pump, pressure and motor power with different flow, please contact our salesman.

## 液压货梯静音动力单元

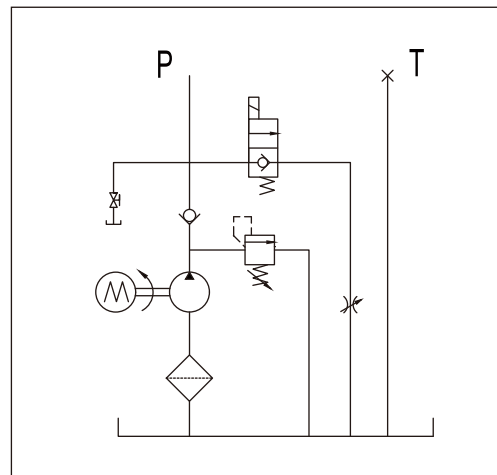
## SILENT POWER UNIT OF HYDRAULIC CARGO ELEVATOR

此液压动力单元专为液压货梯设计，由高压叶片泵、交流浸油电机、阀块、插装阀、油箱集成为一体。采用油浸式电机加叶片泵的设计结构，噪音更低。可叠加多路液压锁，调速阀组合使用。由于噪音小，空间紧凑，被广泛应用于液压货梯等升降设备。电机2.2-5.5KW，电压220-380V可选。

This hydraulic power unit is specially designed for hydraulic cargo elevator and is integrated by high-pressure vane pump, AC oil immersion motor, valve block, cartridge valve and oil tank. The design structure of oil immersed motor and vane pump is adopted, and the noise is lower. Multi channel hydraulic lock can be superimposed and used in combination with speed regulating valve. Due to low noise and compact space, it is widely used in lifting equipment such as hydraulic cargo elevator. The motor is 0.75-5.5kw and the voltage is 220-380v.



## 原理图/SCHEMATIC DIAGRAM



Y3A

## 注意事项/SPECIAL NOTES

- 此动力单元为S3工作制，不可连续运转，10秒开，90秒停。
- 安装前必须保证油缸、油管、接头等液压元件无杂质黏附。
- 液压油粘度应为15-68ST，夏季推荐46号抗磨液压油，冬季推荐32号低温液压油。
- 首次启动运行系统后，应立即检查油箱中的油量是否充足，一般为油箱2/3部位。
- 系统使用第一个100小时后，应更换液压油，以后每3000小时更换一次液压油。

- The power unit is S3 working system and can not operate continuously. It starts in 10 seconds and stops in 90 seconds.
- Before installation, ensure that hydraulic components such as oil cylinder, oil pipe and joint are free of impurities.
- The viscosity of hydraulic oil shall be 15-68st. No. 46 anti-wear hydraulic oil is recommended in summer and No. 32 low temperature hydraulic oil is recommended in winter.
- After starting the operating system for the first time, check whether the oil in the oil tank is sufficient, generally 2 / 3 of the oil tank.
- After the system is used for the first 100 hours, the hydraulic oil shall be replaced, and then the hydraulic oil shall be replaced every 3000 hours.

## 产品配置/SPECIFICATIONS

型号 Model	电压 Volt	功率 Power	转速 Speed	油泵排量 Displacemet	工作压力 Pressure	油箱 Tank	电磁阀电压 Solenoid Vavle Volt
PNC-2.2-A380-4P-2/8-16-25/L-Y3A	380VAC	2.2KW	1400RPM	8CC/REV	16MPA	25L	24VDC
PNC-3-A380-4P-2/10-16-25/L-Y3A		3KW		10CC/REV			220VAC
PNC-4-A380-4P-2/12-16-25/L-Y3A				12CC/REV			

说明：如需不同流量得泵、压力、电机功率等系统参数，请联系我司业务员。

Note: if you need system parameters such as pump, pressure and motor power with different flow, please contact our salesman.

## 停车库静音动力单元

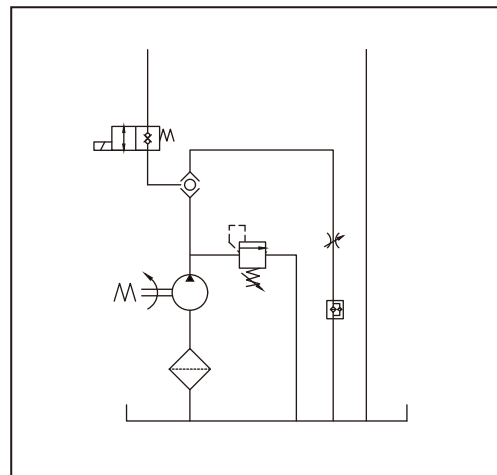
## PARKING GARAGE SILENT POWER UNIT

此液压动力单元专为立体停车库设计，由高压叶片泵、交流浸油电机、阀块、插装阀、油箱集成为一体。采用油浸式电机加叶片泵的设计结构，噪音更低。可叠加多路液压锁，调速阀组合使用。由于噪音小，空间紧凑，被广泛应用于液压货梯等升降设备。电机2.2-5.5KW，电压220-380V可选。

This hydraulic power unit is specially designed for three-dimensional parking garage and is integrated by high-pressure vane pump, AC oil immersion motor, valve block, cartridge valve and oil tank. The design structure of oil immersed motor and vane pump is adopted, and the noise is lower. Multi channel hydraulic lock can be superimposed and used in combination with speed regulating valve. Due to low noise and compact space, it is widely used in lifting equipment such as hydraulic cargo elevator. Motor 2.2-5.5kw, voltage 220-380v optional.



## 原理图/SCHEMATIC DIAGRAM



Y24

## 注意事项/SPECIAL NOTES

- 此动力单元为S3工作制，不可连续运转，10秒开，90秒停。
- 安装前必须保证油缸、油管、接头等液压元件无杂质黏附。
- 液压油粘度应为15-68ST，夏季推荐46号抗磨液压油，冬季推荐32号低温液压油。
- 首次启动运行系统后，应立即检查油箱中的油量是否充足，一般为油箱2/3部位。
- 系统使用第一个100小时后，应更换液压油，以后每3000小时更换一次液压油。

- The power unit is S3 working system and can not operate continuously. It starts in 10 seconds and stops in 90 seconds.
- Before installation, ensure that hydraulic components such as oil cylinder, oil pipe and joint are free of impurities.
- The viscosity of hydraulic oil shall be 15-68st. No. 46 anti-wear hydraulic oil is recommended in summer and No. 32 low temperature hydraulic oil is recommended in winter.
- After starting the operating system for the first time, check whether the oil in the oil tank is sufficient, generally 2 / 3 of the oil tank.
- After the system is used for the first 100 hours, the hydraulic oil shall be replaced, and then the hydraulic oil shall be replaced every 3000 hours.

## 产品配置/SPECIFICATIONS

型号 Model	电压 Volt	功率 Power	转速 Speed	油泵排量 Displacemet	工作压力 Pressure	油箱 Tank	电磁阀电压 Solenoid Vavle Volt
PNC-4-A380-4P-2/8-25-40/L-Y24	380VAC	4KW	1400RPM	8CC/REV	25MPA	40L	24VDC
PNC-5.5-A380-4P-2/13-16-60/L-Y24		5.5KW		13CC/REV		60L	220VAC

说明：如需不同流量得泵、压力、电机功率等系统参数，请联系我司业务员。

Note: if you need system parameters such as pump, pressure and motor power with different flow, please contact our salesman.



节能液压动力单元  
ENERGY SAVING HYDRAULIC POWER UNIT

超效节能液压单元利用蓄能器工作原理配合压力传感器与低泄露液压元件结合达到长时间保持压力，让电机停止工作以达到节约电能的效果。适用于加工中心及需要长期保持压力的机加工生产，产品加工时间越长，节能效果越明显。经实际应用测试，在加工中心工作状态均能达到97%以上，电机长期保持不工作状态，不耗不发热无挥发无噪音，达到节能环保减排降噪的效果。

The energy-saving hydraulic station utilizes the working principle of an accumulator, combined with pressure sensors and low leakage hydraulic components, to maintain pressure for a long time and stop the motor from working, achieving the effect of saving electricity. Suitable for machining centers and those that require long-term maintenance of press machining production. The longer the product processing time, the more significant the energy-saving effect. Through practical application testing, it has been found that the working state of the machining center can reach over 98%. The motor remains in a non working state for a long time, without consumption, heat generation, volatilization, or noise, achieving the effect of energy conservation, environmental protection, emission reduction, and noise reduction.



注意事项/SPECIAL NOTES

- 此动力单元为S3工作制，不可连续运转，10秒开，90秒停。
  - 安装前必须保证油缸、油管、接头等液压元件无杂质黏附。
  - 液压油粘度应为15-68ST，夏季推荐46号抗磨液液压油，冬季推荐32号低温液液压油。
  - 首次启动运行系统后，应立即检查油箱中的油量是否充足，一般为油箱2/3部位。
  - 系统使用第一个100小时后，应更换液液压油，以后每3000小时更换一次液液压油。
- The power unit is S3 working system and can not operate continuously. It starts in 10 seconds and stops in 90 seconds.
  - Before installation, ensure that hydraulic components such as oil cylinder, oil pipe and joint are free of impurities.
  - The viscosity of hydraulic oil shall be 15-68st. No. 46 anti-wear hydraulic oil is recommended in summer and No. 32 low temperature hydraulic oil is recommended in winter.
  - After starting the operating system for the first time, check whether the oil in the oil tank is sufficient, generally 2 / 3 of the oil tank.
  - After the system is used for the first 100 hours, the hydraulic oil shall be replaced, and then the hydraulic oil shall be replaced every 3000 hours.

产品配置/SPECIFICATIONS

名称 Name	型号 Model	电压 Volt	功率 Power	转速 Speed	油泵排量 Displacemet	工作压力 Pressure	油箱 Tank	电磁阀电压 Solenoid Vavle Volt
单四轴液压单元	PNC-JN-SZ-D	380VAC	1.1KW	1400RPM	9.8CC/REV	2-6MPA可调	5L	24VDC
单路动力单元	PNC-JN-1V-D				3.2CC/REV			
四轴+单路动力单元	PNC-JN-SZ/1V-D		2.2KW		220VAC			
五轴动力单元	PNC-JN-WZ							

说明：如需不同流量得泵、压力、电机功率等系统参数，请联系我司业务员。  
Note: if you need system parameters such as pump, pressure and motor power with different flow, please contact our salesman.

动力单元配件  
POWER UNIT ACCESSORIES



V3068



ET-02



ET-03



ET-04



尾板阀组



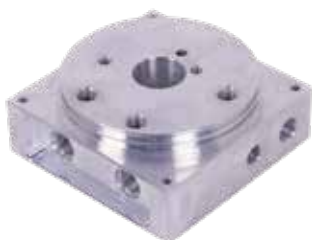
阀组



中心块A



中心块B



中心C



中心D



中心块E



阀块



二联块



三联块



四联块



单向阀



溢流阀



调节阀



电磁阀A



电磁阀B



10电磁阀



比例阀



方向阀



压补阀



液压锁



电磁阀



连接头



联轴器



B14法兰



压力表



压力开关



直流接触器



齿轮泵



塑料油箱



铁圆油箱



铁方油箱





液压站A



液压站B



液压站C



液压站D



液压站E



液压站F



油缸A



油缸B



油缸C



油缸D



油缸E



油缸F

## 目标与规划:

**基础:** 供应链产品的完美整合

**核心:** 自主科技创新

**策略:** 坚持液压单元微型化、智能化

**目标:** 微型液压领跑者

## 公司的经营理念:

以诚为本 海纳百川

以信为根 厚德载物